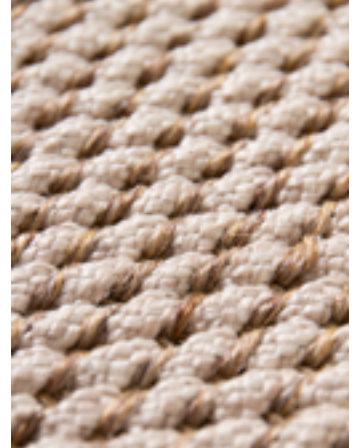
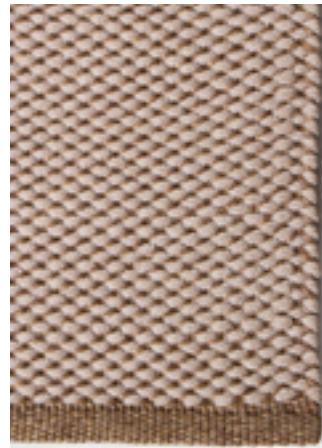


Palma PL-12

In & outdoors



PL-12

*Customizable | Personalizable | Personnalisable

Designer | Diseñador | Designer **MY NOW**
Colors | Colores | Couleurs **9 & 37**
Pile | Altura | Hauteur **0,37 in / 9,5 mm**
Weight | Peso | Poids **9,83 oz/sqft / 3.000 g/m²**
Max. wide | Anchura máxima | Largeur max. **27' / 8 m**
Polypropylene | Polipropileno | Polypropylène

6'x9' | 200x300cm
8'x10' | 250x300 cm
9'x12' | 275x360 cm

CERTIFICATES

- It will pass through flammability test 16CFR-1630 (FF1-70).
- It will pass through UVR transmission test AATCC183-210.
- It will pass through Mildew resistance properties test. AATCC 174-20017 AATCC 30.
- It will pass through colour fastness test, colour staining - in the level of 4/4.5.
- Colour fastness to dry and wet crocking - 4.
- Colour fastness to light AATCC 16.3 after 300 Hours - 4.

www.nowcarpets.com

NOW CARPETS USA INC

174 FIFTH AVENUE, SUITE 503
NEW YORK, NY 10010 (USA)
TEL: +1 646 583 2949
usa@nowcarpets.com

NOW CARPETS USA INC

2727 PONCE DE LEÓN BVLVD
CORAL GABLES, FL 33134(USA)
TEL: +1 646 583 2949
usa@nowcarpets.com

NOW CARPETS S.C.

Pº INDEPENDENCIA 8 DUP. 2º
50004 ZARAGOZA (SPAIN)
TEL: +34 976 46 36 45
now@nowcarpets.com

NOW CARPETS MIDDLE EAST

G-058, TECHNO HUB 1, SILICON OASIS,
DUBAI, UNITED ARAB EMIRATES
T: +971 4 339 8019
info@nowcarpets.ae