

THE CATALOG



Look where you are walking, love what you are walking on; beneath your feet we have created a whole world of experiences.

Welcome to *NOW CARPETS*.

Mira por donde pisas, ama por donde pasas, porque debajo de ti hemos creado todo un mundo para vivirlo.

Bienvenido a *NOW CARPETS*.

Regardez où vous mettez les pieds, aimez où vous allez, car sous vous nous avons créé tout un monde pour le vivre.

Bienvenue à NOW CARPETS.

1. OUR PHYLOSOPY	P.6
2. MANUFACTURING SYSTEM	P.8
3. MATERIALS	P.12
4. DESIGNERS	P.14
5. COLLECTIONS	P.18
6. CUSTOM CARPETS	P.160

7. PROJECTS	P.162
8. TECHNICAL	P.230
9. CERTIFICATES	P.264
10. CLEANING	P.266

OUR PHYLOSOPY

Nuestra filosofía



Miguel Paracuellos

My colleagues have asked me to briefly highlight what has been happening since our previous catalogue was published, so here goes...

Two new designers, Arik Levy and Inma Bermúdez, have joined our team. Both of them offer their modern, cosmopolitan vision of our product. We are now present in all five continents, with offices in New York and Abu Dhabi and we have been commissioned major projects that provide us with greater experience and a more global concept.

Our passion for a job well done has been evident at the international shows and events we have participated in and magazines such as Interior Design, Surface or Wallpaper have showcased some of our key projects.

We have stepped up our “à la carte carpet” service because we believe that each project is unique and each design can be adapted to even the smallest detail.

We have put into operation a “door-to-door” logistics service so that our customers can concentrate on their work without having to think about anything else.

The quality of our products and their compliance with the technical requirements of projects is certified by international companies.

Our moral commitment: RUGMARK certifies that child labour is not used to produce our rugs and carpets.

And last but not least, we are just as enthusiastic as ever about our company project that, without your help and that of the NOWCarpets team, would never have been possible.

We will never lose our passion for a job well done and, of course, our passion for carpets.

Many thanks.

Mis compañeros me piden que destaque brevemente lo acontecido desde nuestro anterior catálogo. Lo intento con la misma ilusión con que siempre lo hemos hecho.

Se han incorporado nuevos diseñadores, Arik Levy e Inma Bermúdez; y todos ellos aportan una visión cosmopolita y actual de nuestro producto. Estamos presentes en los cinco continentes con oficinas en New York y Abu Dhabi. Realizamos grandes proyectos que nos aportaron más experiencia y una concepción más global.

Ferias y eventos internacionales han sido testigo de nuestra pasión por un trabajo bien hecho. Y revistas como Interior Design, Surface o Wallpaper, se han hecho eco de nuestros proyectos.

Hemos reforzado nuestro servicio de “alfombras a la carta”, porque entendemos que cada proyecto es único y cada diseño debe poder adaptarse hasta el más mínimo detalle.

Hemos introducido Nuestro servicio logístico “puerta a puerta”, para que nuestros clientes se centren solo en su trabajo .

Compañías internacionales Certifican la calidad de nuestros productos y los requisitos técnicos necesarios en los proyectos. Compromiso ético: RUGMARK, que certifica la no utilización de mano de obra infantil en la elaboración de nuestras alfombras.

Continuamos ilusionados en nuestro proyecto, que sin su apoyo y el del equipo de NOWCarpets, no hubiera sido posible.

Que no perdamos nunca nuestra pasión por el trabajo bien hecho y, claro está, nuestra pasión por las alfombras.

Muchas gracias.

Mes collègues me demandent de raconter brièvement tout ce qui s'est passé depuis notre dernier catalogue. Je le fais toujours avec la même illusion que celle qui nous caractérise depuis si longtemps.

De nouveaux créateurs font désormais partie de l'équipe, Arik Levy et Inma Bermúdez. Ils apportent tous et chacun une vision cosmopolite et actuelle de notre produit. Nous sommes présents sur les cinq continents et implantés à New York et à Abu Dhabi. Nous réalisons d'importants projets qui nous ont permis d'acquérir une plus grande expérience ainsi qu'une conception plus globale.

Nous avons été présents dans de nombreux salons et événements internationaux qui ont accueilli notre passion pour le travail bien fait. Mais aussi des revues comme Interior Design, Surface ou Wallpaper qui ont parlé de nos projets.

Nous avons renforcé notre service de « tapis à la carte » car nous savons que chaque projet est unique et que chaque création doit pouvoir être personnalisée jusqu'au moindre détail.

Nous avons créé notre service logistique « porte à porte » pour que nos clients n'aient à se centrer que sur leur propre travail.

Des entreprises internationales ont certifié la qualité de nos produits ainsi que les exigences techniques nécessaires à nos projets. Engagement éthique : RUGMARK qui certifie la non-utilisation de main d'oeuvre infantile dans l'élaboration de nos tapis.

Nous apportons une grande illusion à notre projet qui, sans vos efforts et ceux de l'équipe de NOW Carpets, n'aurait jamais été possible.

Ne perdons jamais notre passion pour le travail bien fait et, bien évidemment, notre passion pour les tapis.

Merci énormément.

MANUFACTURING SYSTEMS



Hand Tufted

This is a manual technique in which an artisanal tool is used to punch strands of wool into a stretched cotton or jute canvas to create different definitions and pile heights.

Hand Knotted

This is a manual weaving technique on vertical looms that consists of hand tying knots. The greater the number of knots the better defined the design is. This system allows detailed creations to be produced and the carpets last longer.





Hand Loom knotted

Using a manually operated loom, warp and weft threads are interwoven to achieve different finishes and textures produced with different materials.



Woven Kilim

A system of interwoven threads on a flat surface and which is popularly known as kilim. Some of our outdoor carpets have been produced with this system using recycled polyester.

MATERIALS

Wool



Polypropylene



Bamboo silk



Recycled polyester



Designers

Diseñadores



Miguel Paracuellos



Anna Muravina



Jose Albors



Genna Weiner



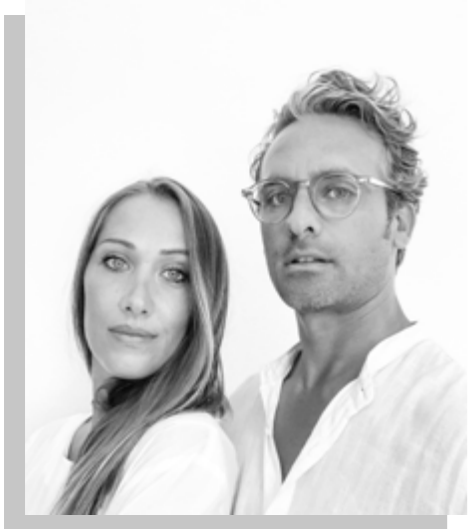
Arik Levy



Inma Bermúdez

Collaborate with greate designers
bring fresh air sharing knowledge
to achive the excellence.

Colaborar con grandes diseñadores
nos permite compartir conocimientos
y conseguir la excelencia



Modo arquitectura



Romero y Vallejo



Francesc Rifé



Yumi Endo



Claudio Colucci



Moneo Brock



Vicente Vidal



Michael Banks



Rafael Alvarez



Stephanie Goto



COLLECTIONS

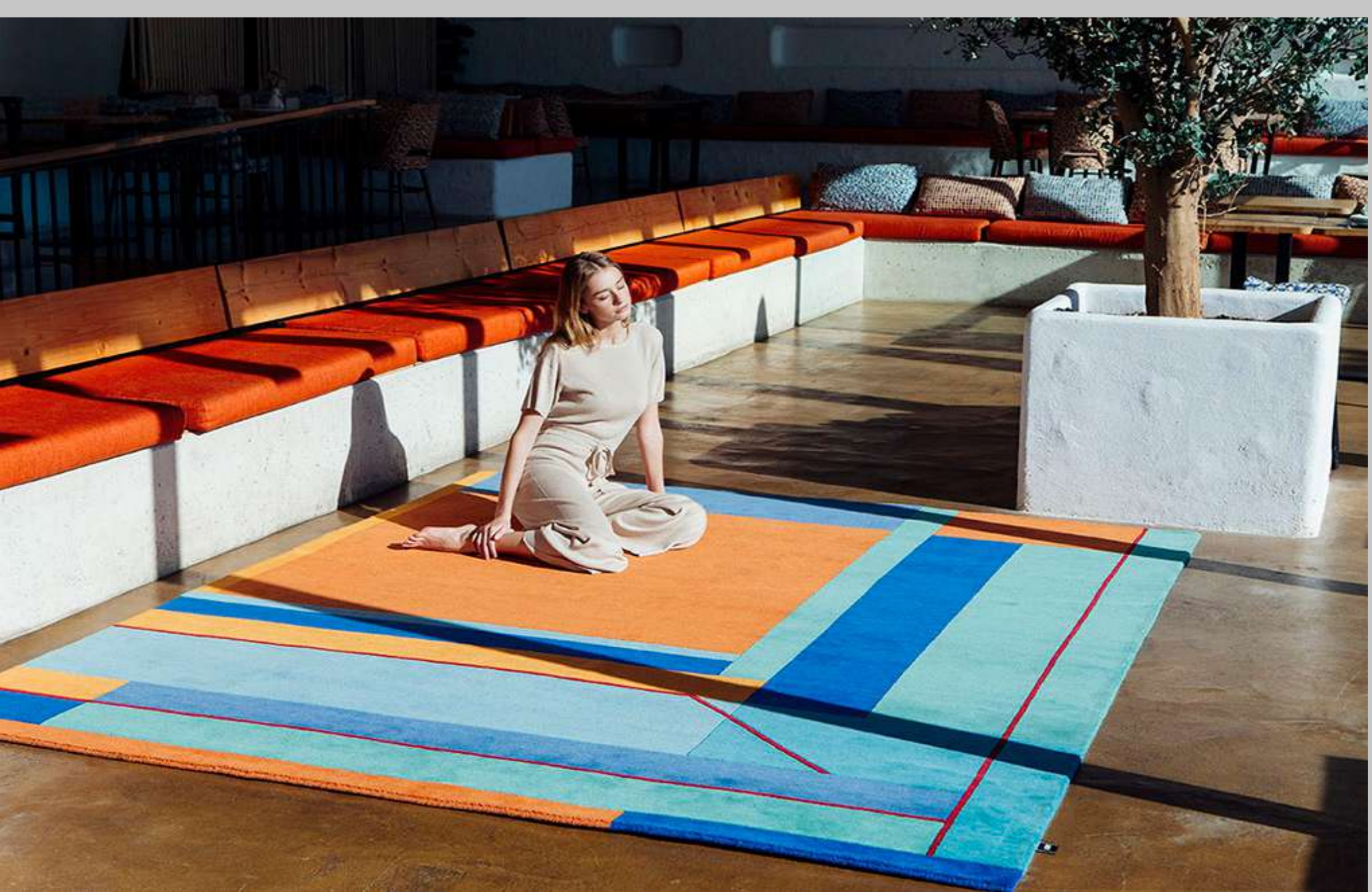
HAND-KNOTTED P20

HAND-TUFTED P59

BASIC CONTRACT P99

IN & OUTDOORS P119

HAND-KNOTTED



RADICAL

Designed by Modo Arquitectura.



Radical RAD-2



Radical RAD-1



THE SEA & THE SAND

Designed by Rafael Alvarez.



The Sea and the Sand
SSA-01



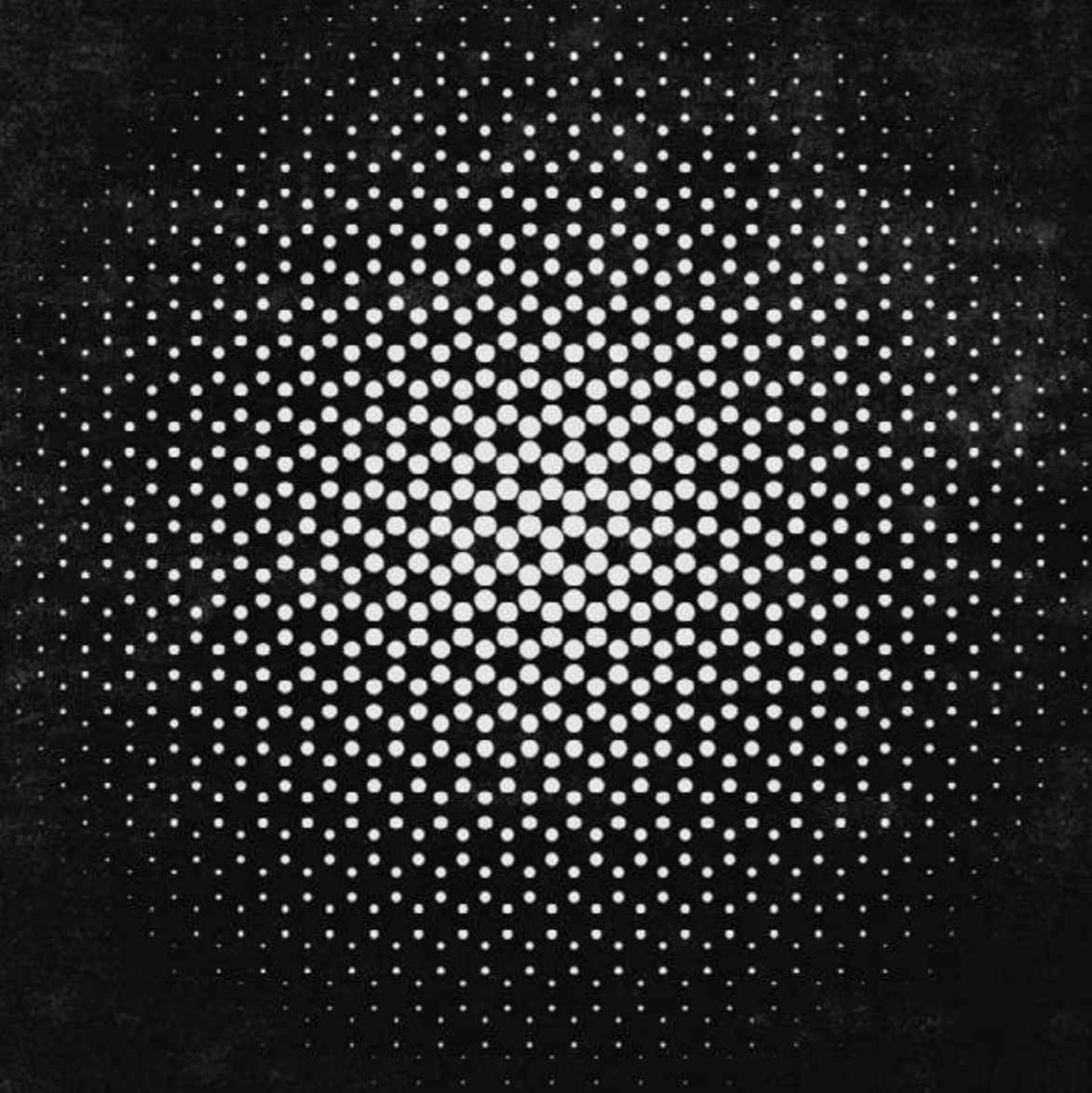
*The Sea and the Sand
SSA-02 and SSA-3*



The Sea and the Sand
SSA-01 and SSA-3

AKARI

Designed by Yumi Endo.







FIUMI

Designed by Jose Albors.



CORSO

Designed by Jose Albers.







LANGUAGE

Designed by Stephanie Goto.

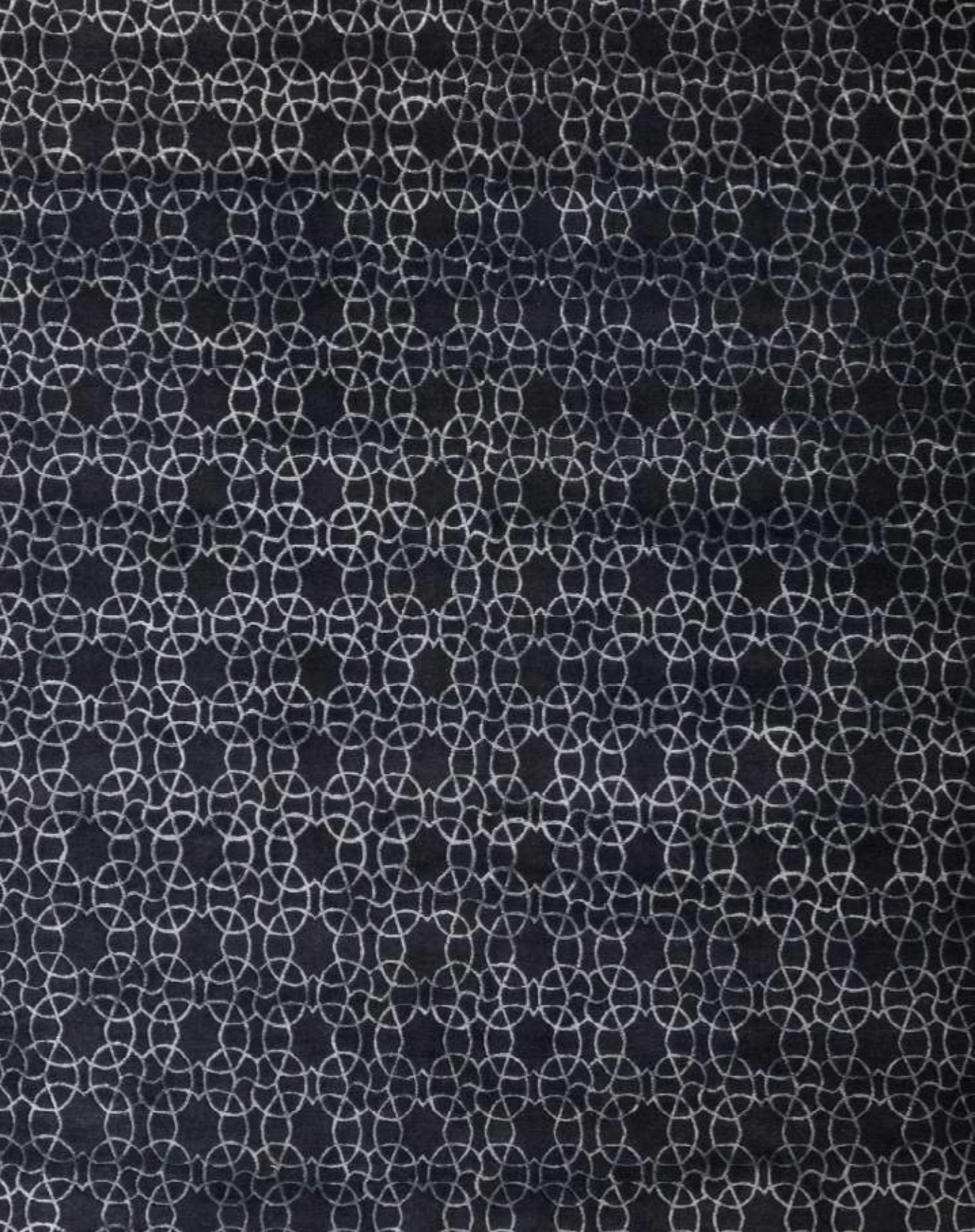




MILES

Designed by Moneo Brock.





KAILA

Designed by Francesc Rifé.



HAND-TUFTED





RADICAL

Designed by Modo Arquitectura.



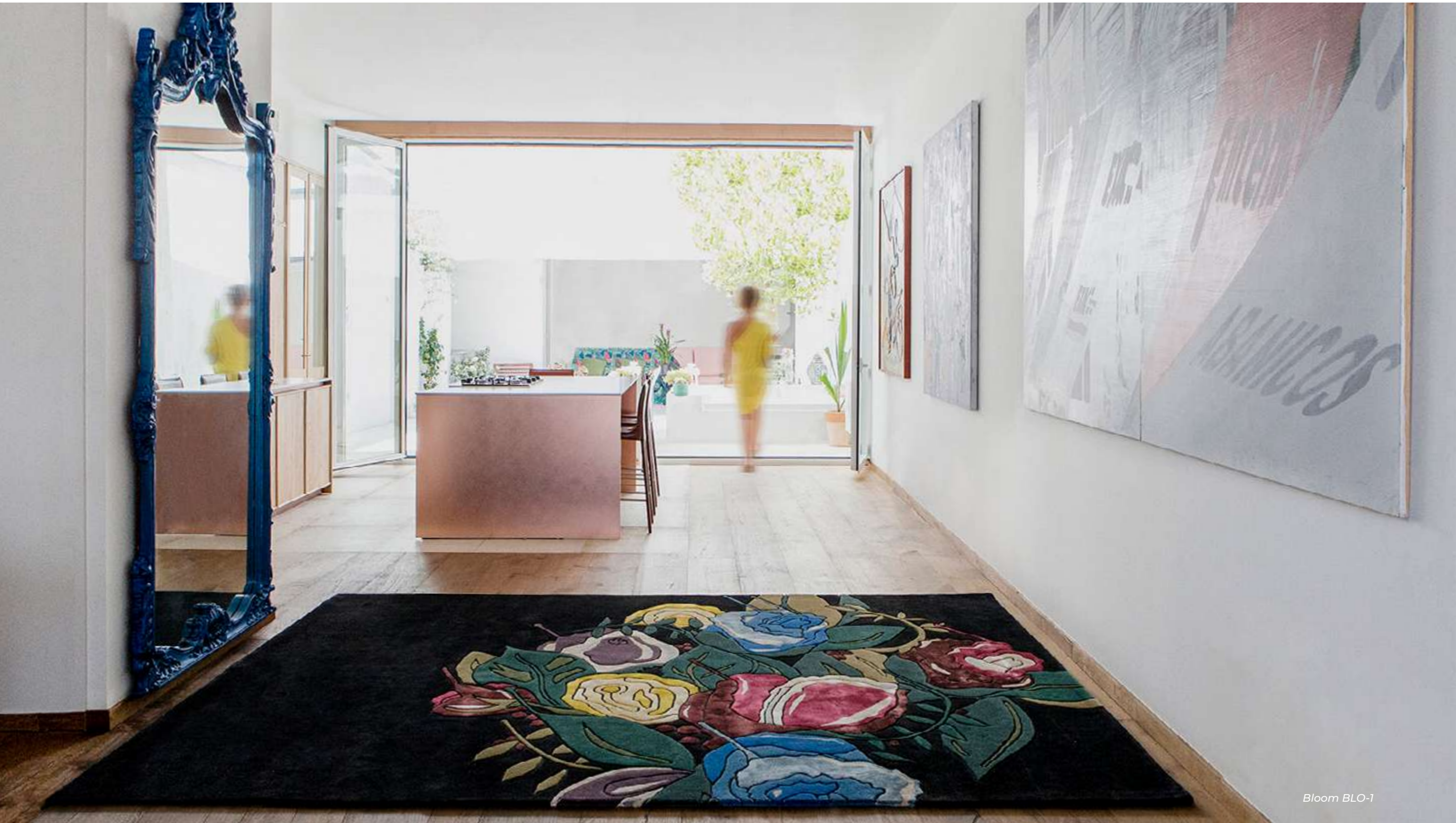
Bloom BLO-1

BLOOM

Designed by Genna Weiner.



Bloom BLO-2



Bloom BLO-1



Bloom BLO-3



LANDSCAPE

Designed by Arik Levy.

Landscape Brazil



Landskape Brazil



Landskape Andalucia

Landskape Huelva



Landskape Monegros



KO

Designed by Francesc Rifé.

KO-3



KO-2

A collection inspired in the nature. A travel around the world to observe different natural areas from the sky.



KO-4



KO-5



FUNGHI

Designed by Francesc Rifé.





MASHA

Designed by Anna Muravina.





KIDS OF THE OCEAN

Designed by Anna Muravina.





SQUEEZE

Designed by Claudio Colucci.



Squeeze SQ-01 Rounded

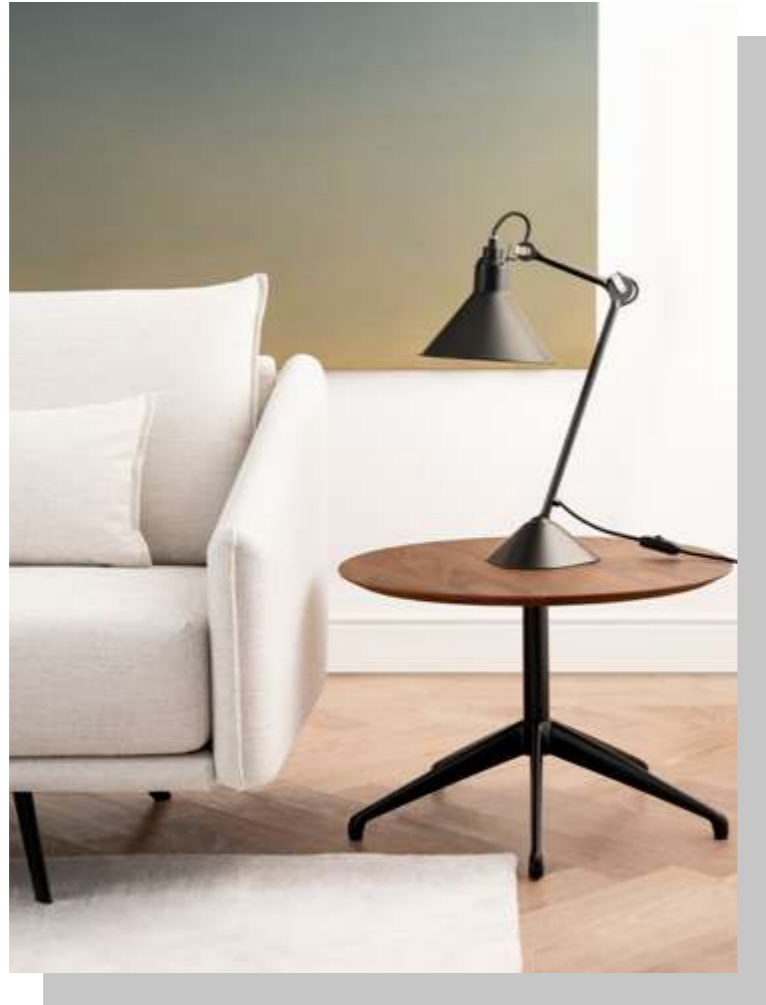
BASIC CONTRACT





BASIC BAMBOO

Designed by My Now.







GOBI

Designed by My Now.





Onn

Designed by My Now.





DUNE IN & OUTDOOR

Designed by My Now.



IN & OUTDOOR



Palma
PL-08



PALMA COLLECTION

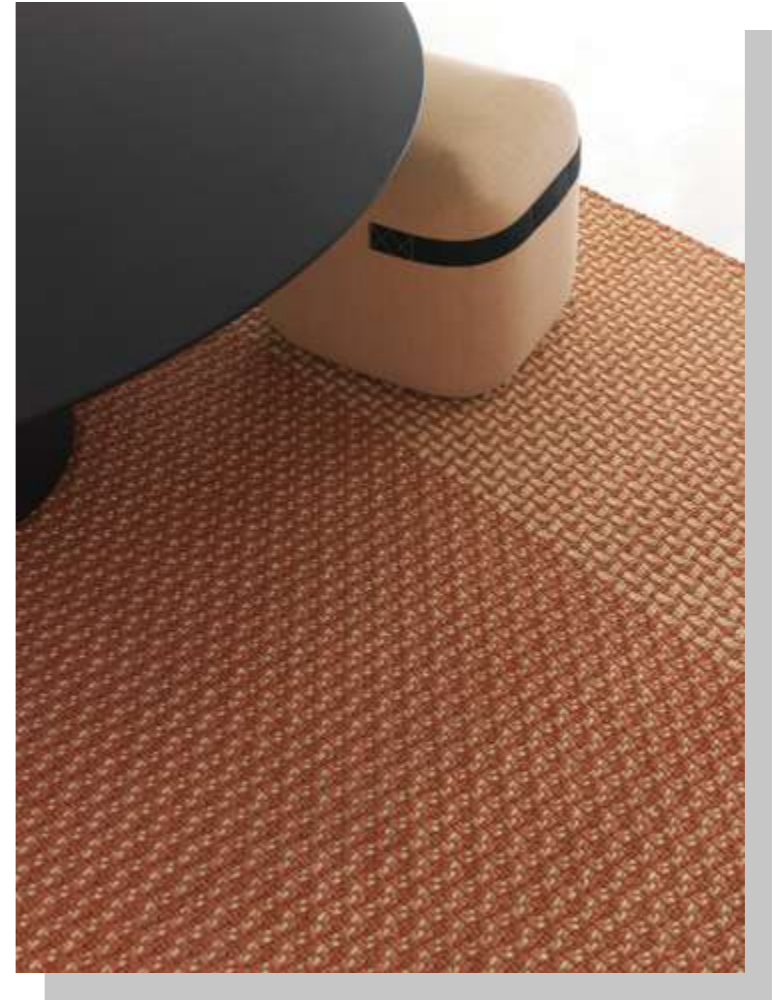
Designed by My Now and Romero y Vallejo.

Palma
PL-07





Palma
PL-11



Palma
PL-03



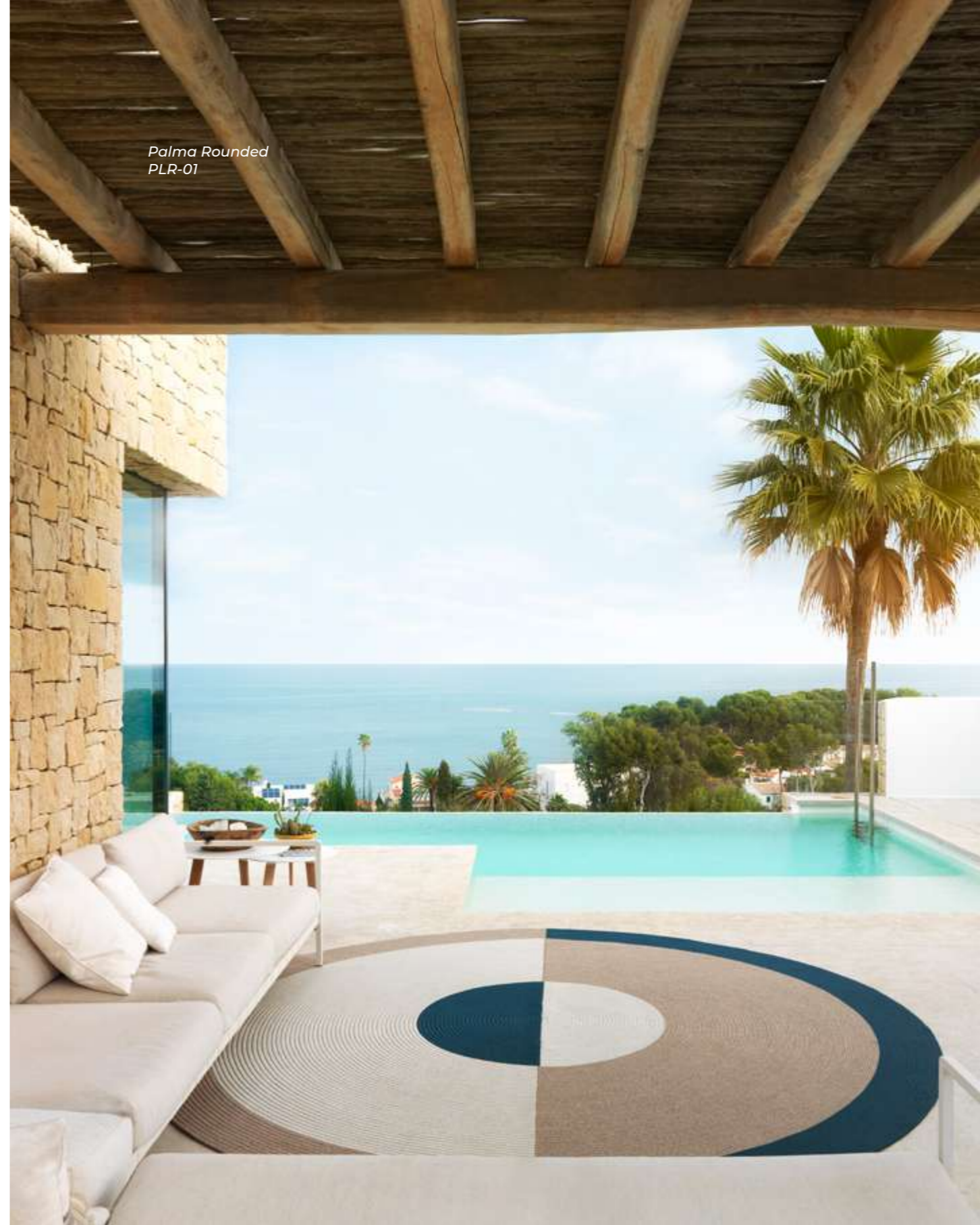


PALMA ROUNDED

Designed by Romero y Vallejo.



Palma Rounded
PLR-02



Palma Rounded
PLR-01



MIAMI

Designed by My Now.

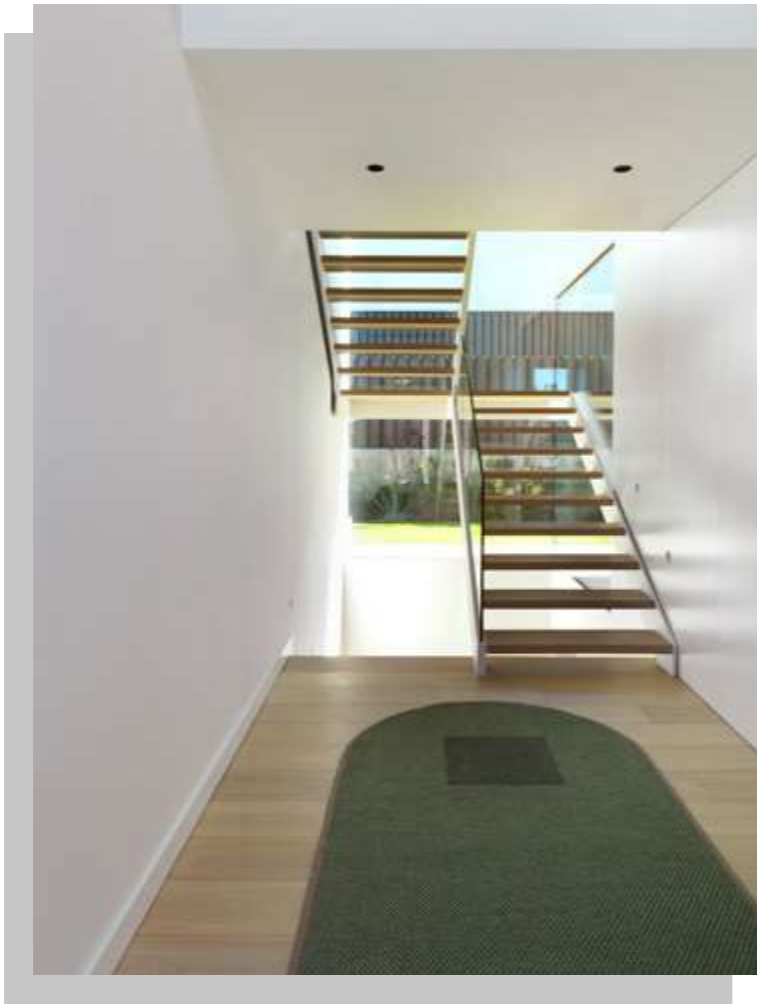






TANGRAM COLLECTION

Designed by La Nonna.



Tangram
Line



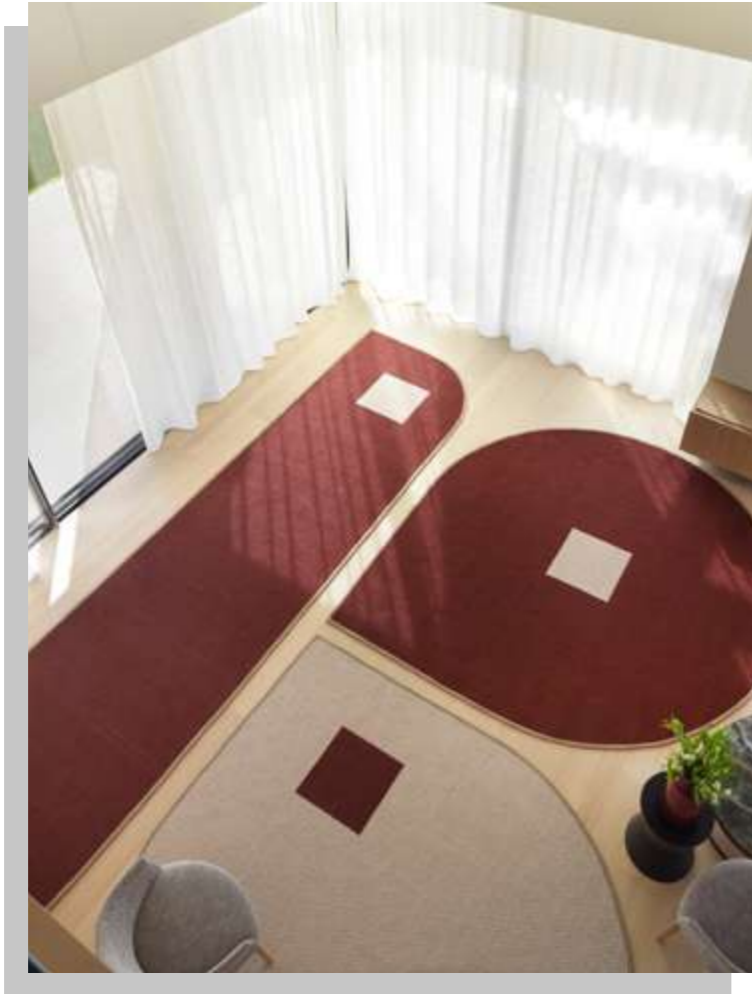
Tangram
Line



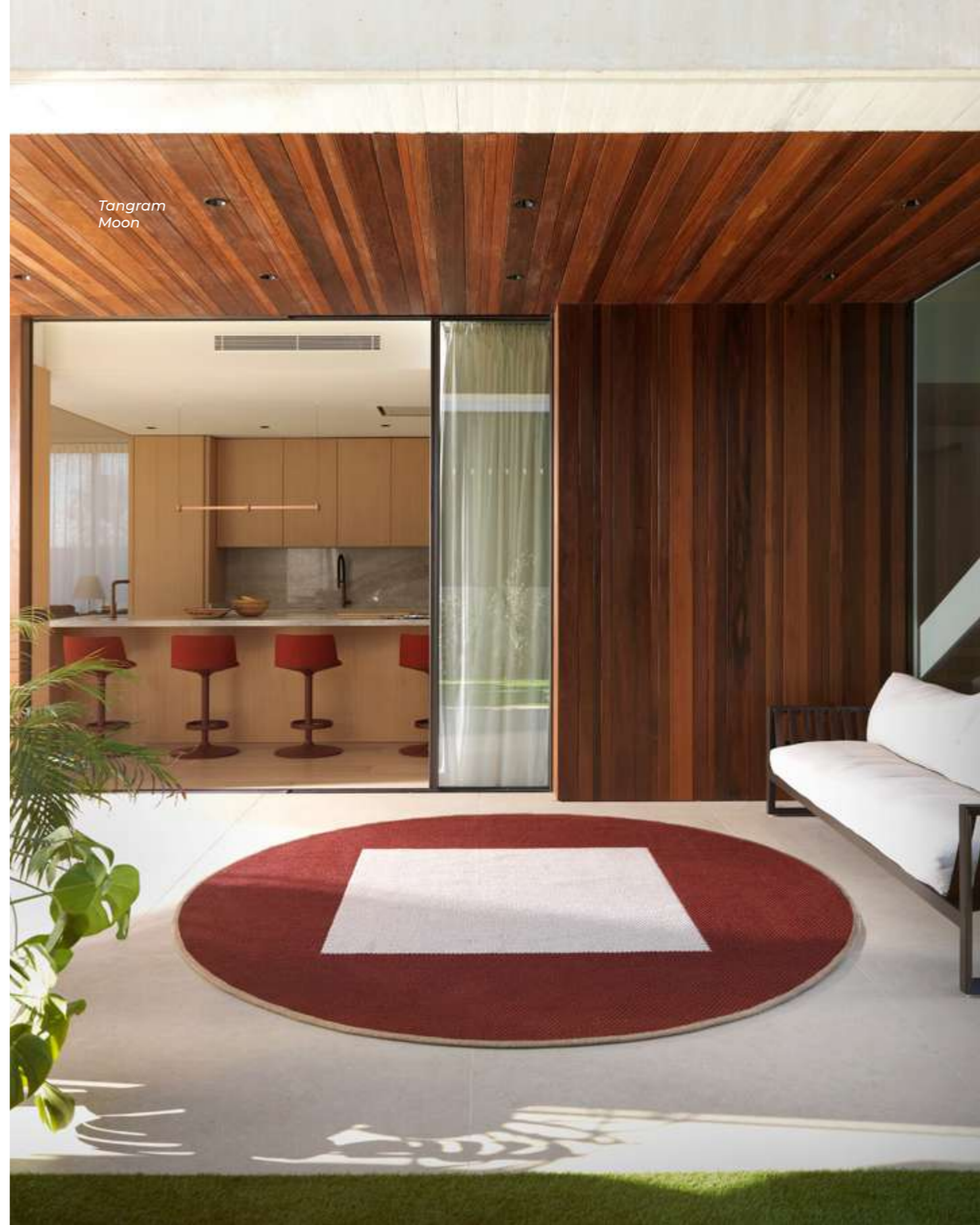
Tangram
Line and Moon

Tangram
Line

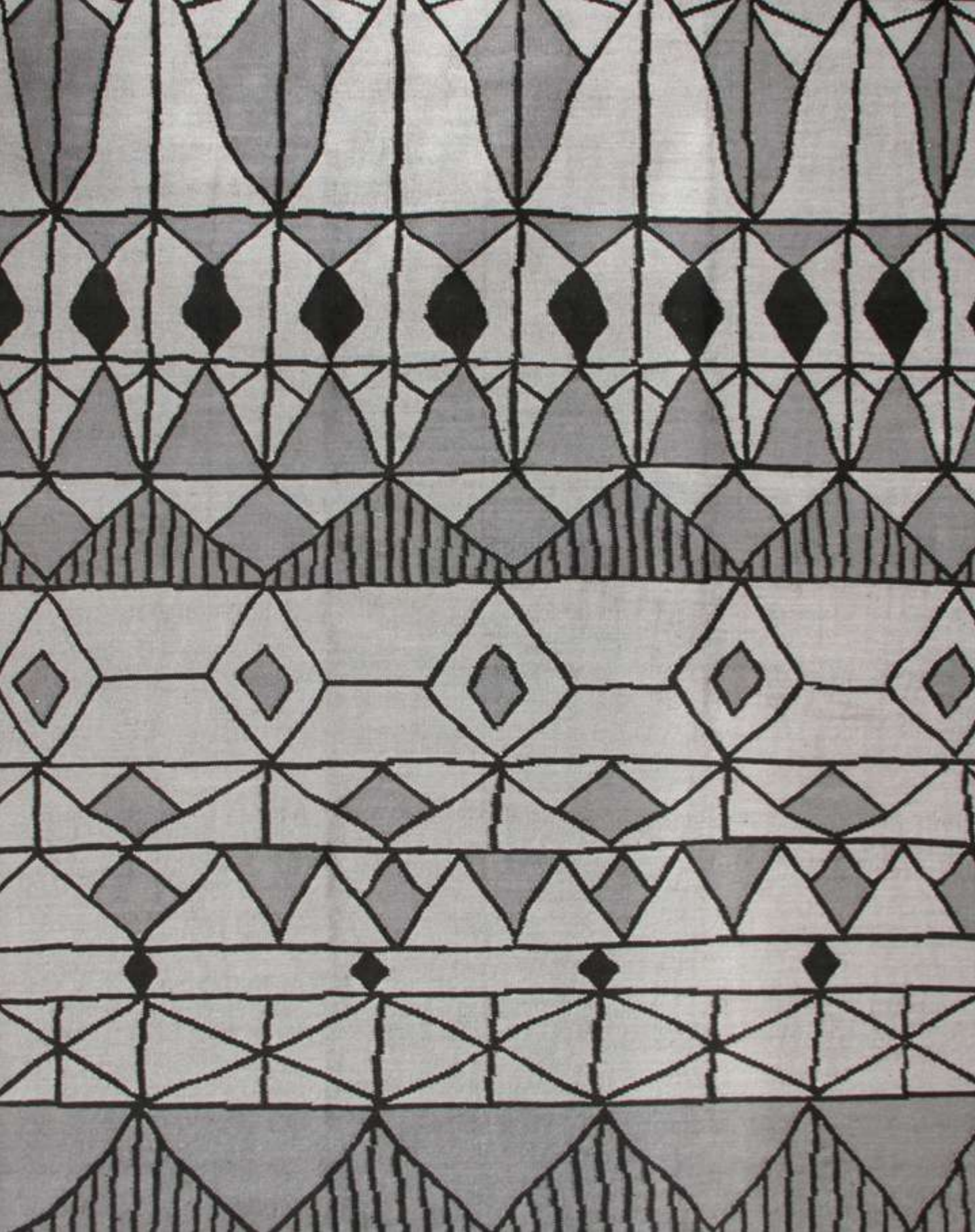




Tangram
Line and Tear



Tangram
Moon



ETNIC KILIM

Designed by Inma Bermúdez.





MOSAIC KILIM

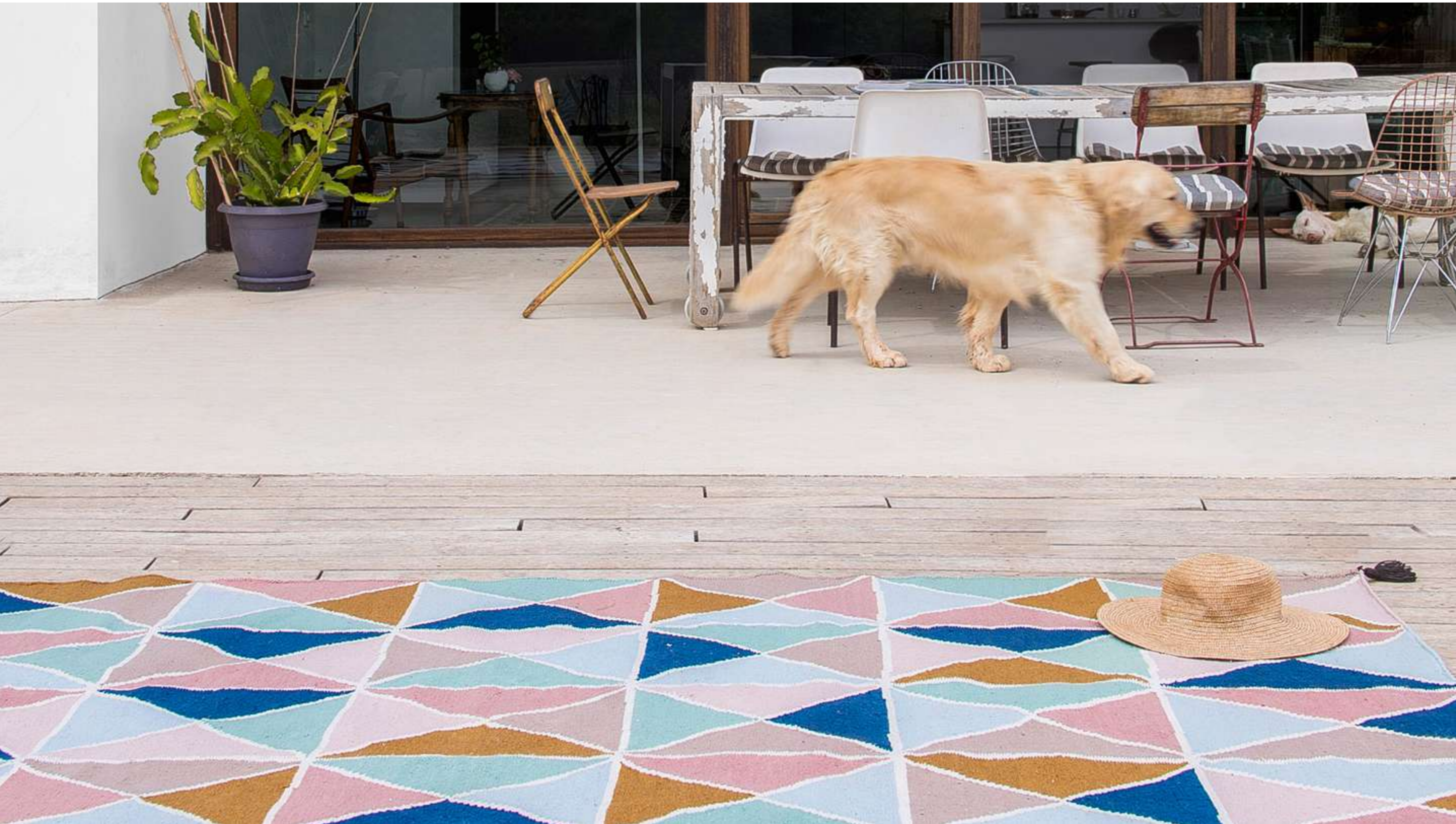
Designed by Inma Bermúdez.





TRIANGLES KILIM

Designed by Inma Bermúdez.



We are custom carpets

Because every project is unique and worthy of special attention, we have increased our CUSTOM CARPET service to offer personalized carpets tailored to each customer's needs, either for individual projects or contract projects. Personalisation down to the very last detail to suit your needs and tastes. And with very short delivery times.

Porque cada proyecto es único y merece una atención especial, hemos reforzado nuestro servicio de ALFOMBRAS A LA CARTA, ofreciendo la posibilidad de realizar alfombras personalizadas y a la medida de cada cliente ya sea para proyectos individuales como para contract. Personalización hasta el último detalle según sus necesidades y gustos. Y con un plazo de entrega muy breve.

YOUR OWN DESIGNS (CUSTOM RUGS) TUS PROPIOS DISEÑOS (ALFOMBRAS A LA CARTA)

MATERIALS: WOOL, BAMBOO, VISCOSE, SILK,
HEMP, LINEN, ETC...
DIFFERENT SIZES / MEASURES / COLORS

MATERIALES: LANA, BAMBÚ, VISCOSA,
SEDA, CÁÑAMO, LINO, ETC...
DIFERENTES FORMAS / MEDIDAS / COLORES



PROJECTS

We are custom carpets

Now Carpets has extensive experience developing projects all over the world. For more than 30 years we have had the opportunity to collaborate on projects with partners such as Hyatt, Rich Carlton, Novotel, Mercer and many others.

Each project has a nature and we can adapt each design to the needs of the project, colors, shapes and size are customizable to fit perfectly. You can also create your own design, creating a special and unique piece.

Now Carpets tiene una gran experiencia desarrollando proyectos en todo el mundo. Durante más de 30 años hemos tenido la oportunidad de colaborar en proyectos con marcas como Hyatt, Rich Carlton, Novotel, Mercer y muchos otros.

Cada proyecto tiene una naturaleza distinta y podemos adaptar cada diseño a las necesidades del proyecto, los colores, las formas y el tamaño son personalizables para encajar a la perfección con el entorno. Además puedes crear tu propio diseño, creando una pieza especial y única.



W Barcelona





Tangram
Line and Tear



Tangram
Moon





Ritz Carlton St. Thomas









HOTEL RADISSON BLUE BÉKER BUDAPEST







HOTEL MERCER SEVILLA









HOTEL MERCER BARCELONA







HOTEL CAMAYANNE CONAKRY



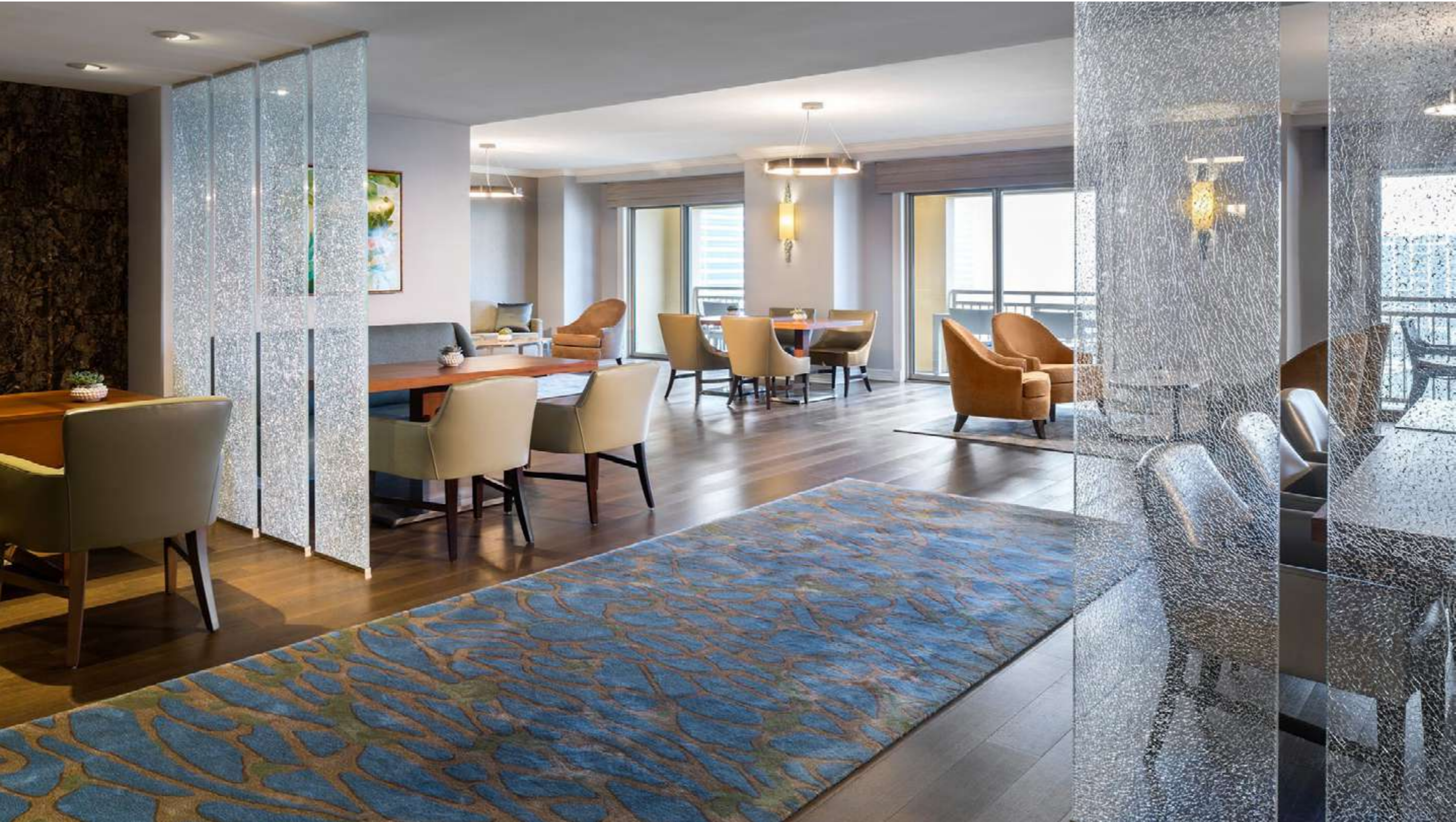








RITZ CARLTON SARATOSA





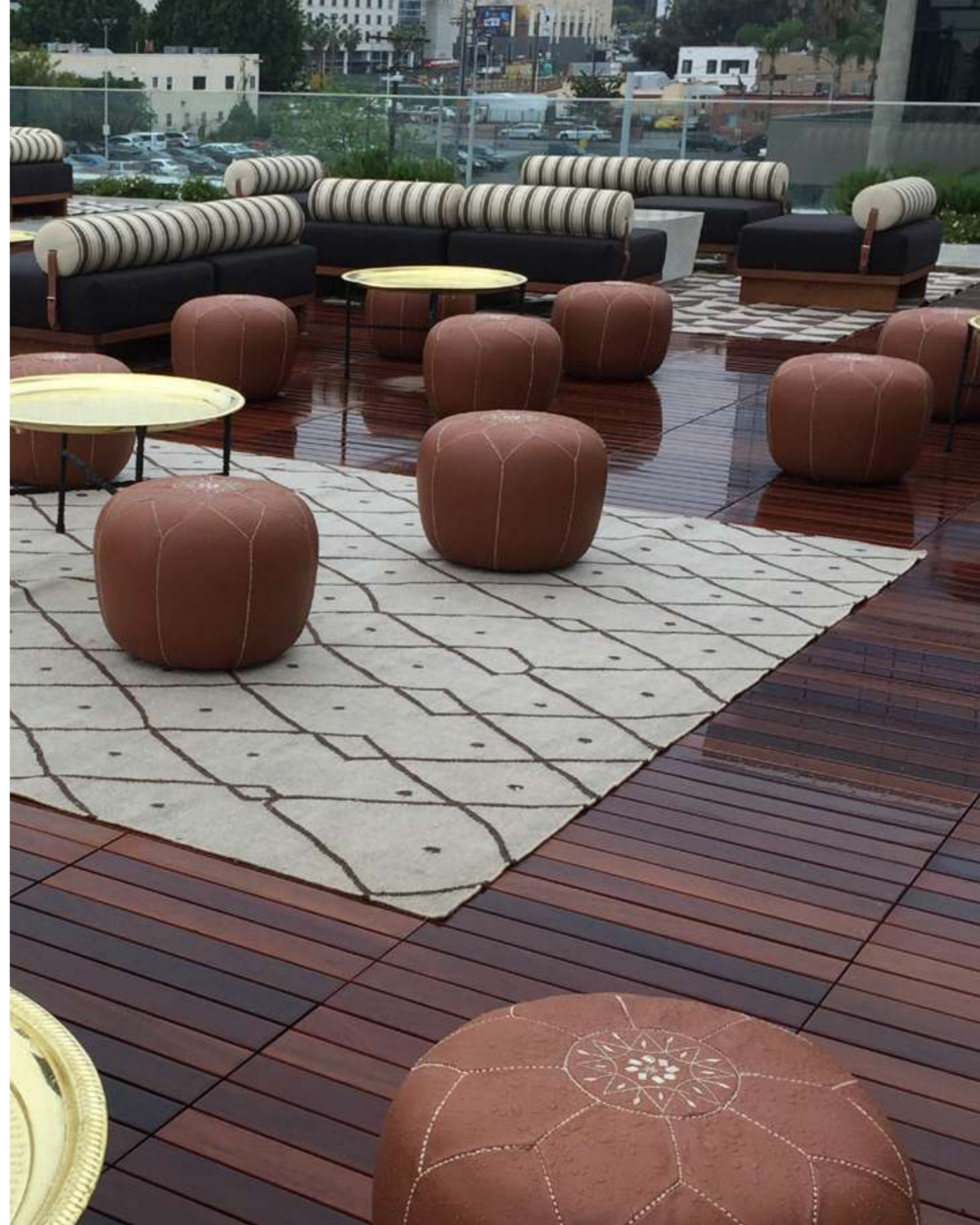
HOTEL GOLF ALMERIMAR







NEUEHOUSE LOS ANGELES





COCA-COLA HQ MADRID







TECHNICAL

THE SEA AND THE SAND	232
BLOOM	233
RADICAL.....	234
LANDSKAPE	235
KO.....	236
KAILA.....	238
MYM	238
STRAW	238
EGO.....	239
FUNGHI	239
LEAF	239
ONA	240
RING	241
SEA SEA	241
LUCKY YOU	241
KIDS OF THE OCEAN	242
MASHA	242
GRISHA.....	242
VERA	243
LANGUAGE.....	243
TRIANGULOS.....	243
MOSAIC.....	244
ETNICA	244
AKARI	244
BOTAN	245
CORSO	245
ICEBERG	245

CONNECTION	245
SABIA	245
FIUMI	246
MIRE	246
SKULL	247
SKYSCRAPER.....	248
SQUEEZE	248
MILES	250
ALPHABET.....	250
FILAMENTS	250
URBAN.....	251
FLAMES	251
VAGUES DE LA MER	252
REVES ARABES	252
UN PAPILLON	252
TANGER	253
GOBI	254
DUNE IN& OUTDOOR	254
ON	254
BASIC BAMBOO SILK	255

IN & OUTDOOR

Palma	256
Palma Rounded	261
Miami	261
Tangram	262

The sea and the sand

HAND KNOTTED 80 LINES



SSA-1

Customizable

Designer | Diseñador | Designer: Rafael Alvarez.
 100% wool nz | 100% lana nz | 100% laine nz.
 Size | Tamaño | Mesures: 6'x9'-8'x10'-9'x12' | 170x240 - 200x300 - 250x300
 Height | Altura | Hauteur: 10mm | 0,39in
 Weight | Peso | Poids: 13oz/ft² | 4.000 gr/m²
 Colours | Colores | Couleurs: 820-953-913-295-840-154-897-954



SSA-2

Customizable

Designer | Diseñador | Designer: Rafael Alvarez.
 100% wool nz | 100% lana nz | 100% laine nz.
 Size | Tamaño | Mesures: 6'x9'-8'x10'-9'x12' | 170x240 - 200x300 - 250x300
 Height | Altura | Hauteur: 10mm | 0,39in
 Weight | Peso | Poids: 13oz/ft² | 4.000 gr/m²
 Colours | Colores | Couleurs: 971-954-953-149-817-913-879



SSA-3

Customizable

Designer | Diseñador | Designer: Rafael Alvarez.
 100% wool nz | 100% lana nz | 100% laine nz.
 Size | Tamaño | Mesures: 6'x9'-8'x10'-9'x12' | 170x240 - 200x300 - 250x300
 Height | Altura | Hauteur: 10mm | 0,39in
 Weight | Peso | Poids: 13oz/ft² | 4.000 gr/m²
 Colours | Colores | Couleurs: 270-149-209-288-872-269

Bloom

HAND TUFTED



BLO-1

Customizable

Designer | Diseñador | Designer: Genna Weiner.
 Lana natural + bambú seda | Natural wool + bamboo silk | Laine naturelle + soie bambou.
 Size | Tamaño | Mesures: 6'x9'-8'x10'-9'x12' | 170x240 - 200x300 - 250x300
 Height | Altura | Hauteur: 0,55in | 14mm
 Weight | Peso | Poids: 14oz/ft² | 5.250 gr/m²
 Colours | Colores | Couleurs: 806-876-2904-953-289-249-846-854-874-814-829-101-909-973



BLO-2

Customizable

Designer | Diseñador | Designer: Genna Weiner.
 Natural wool + bamboo silk | Lana natural + bambú seda | Laine naturelle + soie bambou.
 Size | Tamaño | Mesures: 6'x9'-8'x10'-9'x12' | 170x240 - 200x300 - 250x300
 Height | Altura | Hauteur: 0,55in | 14mm
 Weight | Peso | Poids: 14oz/ft² | 5.250 gr/m²
 Colours | Colores | Couleurs: 806-876-2904-953-289-249-846-854-874-814-829-101-909-120-870-299-973



BLO-3

Customizable

Designer | Diseñador | Designer: Genna Weiner.
 Natural wool + bamboo silk | Lana natural + bambú seda | Laine naturelle + soie bambou.
 Size | Tamaño | Mesures: 6'x9'-8'x10'-9'x12' | 170x240 - 200x300 - 250x300
 Height | Altura | Hauteur: 0,55in | 14mm
 Weight | Peso | Poids: 14oz/ft² | 5.250 gr/m²
 Colours | Colores | Couleurs: 806-876-2904-953-289-249-846-854-874-814-829-101-909-973

Radical

HAND KNOTTED 80 LINES



RAD-1

Customizable

Designer | Diseñador | Designer: Modo architettura.

80% wool + 20% bamboo silk | 80% lana + 20% bambú seda | 80% laine nz. + 20% bambou soïée.

Size | Tamaño | Mesures: 6'x9'-8'x10'-9'x12' | 170x240 - 200x300 - 250x300

Height | Altura | Hauteur: 10mm | 0,39in

Weight | Peso | Poids: 13oz/ft² | 4.000 gr/m²

Colours | Colores | Couleurs: 921-970-812-868-890-900-909



RAD-2

Customizable

Designer | Diseñador | Designer: Modo architettura.

80% wool + 20% bamboo silk | 80% lana + 20% bambú seda | 80% laine nz. + 20% bambou soïée.

Size | Tamaño | Mesures: 6'x9'-8'x10'-9'x12' | 170x240 - 200x300 - 250x300

Height | Altura | Hauteur: 10mm | 0,39in

Weight | Peso | Poids: 13oz/ft² | 4.000 gr/m²

Colours | Colores | Couleurs: 825-909-981-890-870-WHITE 001



RAD-3

Customizable

Designer | Diseñador | Designer: Modo architettura.

80% wool + 20% bamboo silk | 80% lana + 20% bambú seda | 80% laine nz. + 20% bambou soïée.

Size | Tamaño | Mesures: 6'x9'-8'x10'-9'x12' | 170x240 - 200x300 - 250x300

Height | Altura | Hauteur: 10mm | 0,39in

Weight | Peso | Poids: 13oz/ft² | 4.000 gr/m²

Colours | Colores | Couleurs: 890-889-841

Brazil

HAND TUFTED 100 LINES



BRA-1

Customizable

Designer | Diseñador | Designer: Arik Levy.

70% wool + 30% bamboo | 70% lana + 30% bambú | 70% laine nz. + 30% bambou.

Size | Tamaño | Mesures: 6'x9'-8'x10'-9'x12' | 170x240 - 200x300 - 250x300

Height | Altura | Hauteur: 0,39in | 10mm

Weight | Peso | Poids: 13oz/ft² | 4.000 gr/m²

Colours | Colores | Couleurs: 890-18A

Huelva

HAND TUFTED 100 LINES



HUE-1

Customizable

Designer | Diseñador | Designer: Arik Levy.

50%+50% wool + bamboo silk | lana + bambú seda | laine nz. + bambou soie.

Size | Tamaño | Mesures: 6'x9'-8'x10'-9'x12' | 170x240 - 200x300 - 250x300

Height | Altura | Hauteur: 0,39in | 10mm

Weight | Peso | Poids: 13oz/ft² | 4.000 gr/m²

Colours | Colores | Couleurs: 869-02G

Andalucia

HAND TUFTED 100 LINES



AND-1

Customizable

Designer | Diseñador | Designer: Arik Levy.

75% lana + 25% bambú | 75% wool + 25% bamboo | 75% laine nz. + 25% bambou.

Size | Tamaño | Mesures: 6'x9'-8'x10'-9'x12' | 170x240 - 200x300 - 250x300

Height | Altura | Hauteur: 0,39in | 10mm

Weight | Peso | Poids: 13oz/ft² | 4.000 gr/m²

Colours | Colores | Couleurs: 869-02G

Monegros

HAND TUFTED 100 LINES



MON-1

Customizable

Designer | Diseñador | Designer: Arik Levy.

70% wool + 30% bamboo | 70% lana + 30% bambú | 70% laine nz. + 30% bambou.

Size | Tamaño | Mesures: 6'6"x9'8"-8'x10'-9'x12' | 170x240 - 200x300 - 250x300

Height | Altura | Hauteur: 0,39in | 10mm

Weight | Peso | Poids: 13oz/ft² | 4.000 gr/m²

Colours | Colores | Couleurs: 808-06A

KO

HAND TUFTED 100 LINES



KO-1

Customizable

Designer | Diseñador | Designer: Francesc Rifé.

100% bambú seda | 100% bamboo silk | 100% soie bambou.

Size | Tamaño | Mesures: 6'6"x9'8"-8'x10'-9'x12' | 200x300 - 250x300

Height | Altura | Hauteur: 0,39in | 10mm

Weight | Peso | Poids: 13oz/ft² | 4.000 gr/m²

Colours request | Colores a consultar | Couleurs demander.



KO-2

Customizable

Designer | Diseñador | Designer: Francesc Rifé.

100% bambú seda | 100% bamboo silk | 100% soie bambou.

Size | Tamaño | Mesures: 6'6"x9'8"-8'x10'-9'x12' | 200x300 - 250x300

Height | Altura | Hauteur: 0,39in | 10mm

Weight | Peso | Poids: 13oz/ft² | 4.000 gr/m²

Colours request | Colores a consultar | Couleurs demander.

KO

HAND TUFTED 100 LINES



KO-3

Customizable

Designer | Diseñador | Designer: Francesc Rifé.

100% bambú seda | 100% bamboo silk | 100% soie bambou.

Size | Tamaño | Mesures: 6'6"x9'8"-8'x10'-9'x12' | 200x300 - 250x300

Height | Altura | Hauteur: 0,39in | 10mm

Weight | Peso | Poids: 13oz/ft² | 4.000 gr/m²

Colours request | Colores a consultar | Couleurs demander.



HO-4

Customizable

Designer | Diseñador | Designer: Francesc Rifé.

100% bambú seda | 100% bamboo silk | 100% soie bambou.

Size | Tamaño | Mesures: 6'6"x9'8"-8'x10'-9'x12' | 200x300 - 250x300

Height | Altura | Hauteur: 0,39in | 10mm

Weight | Peso | Poids: 13oz/ft² | 4.000 gr/m²

Colours request | Colores a consultar | Couleurs demander.



KO-5

Customizable

Designer | Diseñador | Designer: Francesc Rifé.

100% bambú seda | 100% bamboo silk | 100% soie bambou.

Size | Tamaño | Mesures: 6'6"x9'8"-8'x10'-9'x12' | 200x300 - 250x300

Height | Altura | Hauteur: 0,39in | 10mm

Weight | Peso | Poids: 13oz/ft² | 4.000 gr/m²

Colours request | Colores a consultar | Couleurs demander.

Kaila

HAND KNOTTED 100 LINE



KL-01

Customizable

Designer | Diseñador | Designer: Francesc Rifé.
 50% lana + 50% bambú | 50% wool + 50% bamboo | 50% laine nz. + 50% bambou.
 Size | Tamaño | Mesures: 5'6"x7'9"-6'6"x9'8"-8'x10'-9'x12' | 170x240 - 200x300 - 250x300
 Height | Altura | Hauteur: 10mm | 0,39in
 Weight | Peso | Poids: 13oz/ft² | 4.000 gr/m²
 Colours | Colores | Couleurs: 825-910

Mym

HAND KNOTTED 80 LINE



RN-02

Customizable

Designer | Diseñador | Designer: Francesc Rifé.
 75% lana + 25% yute | 75% wool + 25% jute | 75% laine nz. + 25% jute.
 Size | Tamaño | Mesures: 5'6"x7'9"-6'6"x9'8"-8'x10'-9'x12' | 170x240 - 200x300 - 250x300
 Height | Altura | Hauteur: 10mm | 0,39in
 Weight | Peso | Poids: 13oz/ft² | 4.000 gr/m²
 Colours | Colores | Couleurs: 842-869

Straw

HAND KNOTTED 100 LINE



ST-01

Customizable

Designer | Diseñador | Designer: Francesc Rifé.
 70% lana + 30% viscosa | 70% wool + 30% viscose | 70% laine nz. + 30% viscose.
 Size | Tamaño | Mesures: 5'6"x7'9"-6'6"x9'8"-8'x10'-9'x12' | 170x240 - 200x300 - 250x300
 Height | Altura | Hauteur: 10mm | 0,39in
 Weight | Peso | Poids: 13oz/ft² | 4.000 gr/m²
 Colours | Colores | Couleurs: 824-981

Ego

HAND TUFTED



EG-01

Customizable

Designer | Diseñador | Designer: Francesc Rifé.
 100% wool | 100% lana | 100% laine nz.
 Size | Tamaño | Mesures: 7'9"x 9'2" | 240x280
 Height | Altura | Hauteur: 0,66in | 17mm
 Weight | Peso | Poids: 14oz/ft² | 4.250 gr/m²
 Colours | Colores | Couleurs: 842-981

Funghi

HAND TUFTED



FG-1

Customizable

Designer | Diseñador | Designer: Francesc Rifé.
 100% wool | 100% lana | 100% laine nz.
 Size | Tamaño | Mesures: 2'3"x4'6"-5'6"x7'9"-6'6"x9'8"-8'x10' | 70x140-170x240-200x300
 Height | Altura | Hauteur: 0,7in | 18mm
 Weight | Peso | Poids: 14oz/ft² | 4.250 gr/m²
 Colours | Colores | Couleurs: 826

Leaf

HAND TUFTED



LF-3

Customizable

Designer | Diseñador | Designer: Francesc Rifé.
 100% wool | 100% lana | 100% laine nz.
 Size | Tamaño | Mesures: 5'x6'6"-5'6"x7'9"-5'6"x5'6"-6'6"x9'8" | 150x200-170x240-170x170-200x300
 Height | Altura | Hauteur: 0,66in | 17mm
 Weight | Peso | Poids: 14oz/ft² | 4.250 gr/m²
 Colours | Colores | Couleurs: 911

Leaf Rounded

HAND TUFTED



LF-01

Customizable

Designer | Diseñador | Designer: Francesc Rifé.
100% wool | 100% lana | 100% laine nz.
Size | Tamaño | Mesures: Ø6'6" | Ø 200
Height | Altura | Hauteur: 0,66in | 17mm
Weight | Peso | Poids: 14oz/ft² | 4.250 gr/m²
Colours | Colores | Couleurs: 822

Ona

HAND TUFTED



ON-01

Customizable

Designer | Diseñador | Designer: Francesc Rifé.
100% wool | 100% lana | 100% laine nz.
Size | Tamaño | Mesures: 5'x6'6"-5'6"x7'9"-5'6"x5'6"-6'6"x9'8" | 150x200-170x240-170x170-200x300
Height | Altura | Hauteur: 0,66in | 17mm
Weight | Peso | Poids: 14oz/ft² | 4.250 gr/m²
Colours | Colores | Couleurs: 931

Ona Rounded

HAND TUFTED



ON-05

Customizable

Designer | Diseñador | Designer: Francesc Rifé.
100% wool | 100% lana | 100% laine nz.
Size | Tamaño | Mesures: Ø5'-Ø6'6" | Ø150-Ø200
Height | Altura | Hauteur: 0,66in | 17mm
Weight | Peso | Poids: 14oz/ft² | 4.250 gr/m²
Colours | Colores | Couleurs: 869

Ring

HAND TUFTED



RG-01

Customizable

Designer | Diseñador | Designer: Francesc Rifé.
100% wool | 100% lana | 100% laine nz.
Size | Tamaño | Mesures: Ø8'2" | Ø250
Height | Altura | Hauteur: 0,66in | 17mm
Weight | Peso | Poids: 14oz/ft² | 4.250 gr/m²
Colours | Colores | Couleurs: 910-989

Sea Sea

HAND TUFTED



SA-1

Customizable

Designer | Diseñador | Designer: Christian Ghion.
75% wool + 25% viscose | 75% lana + 25% viscosa | 75% laine nz. + 25% viscose.
Size | Tamaño | Mesures: 5'6"x7'9"-6'6"x9'8"-7'9"x7'9"-8'10" | 170x240-200x300-240x240
Height | Altura | Hauteur: 0,66in | 17mm
Weight | Peso | Poids: 14oz/ft² | 4.250 gr/m²
Colours | Colores | Couleurs: 8955-949-995

Lucky you

HAND TUFTED 100 LINES



LUK-1

Customizable

Designer | Diseñador | Designer: Anna Muravina.
Bamboo silk | Bambú seda | Soie bambou.
Size | Tamaño | Mesures: 8'x10' | 200x300
Height | Altura | Hauteur: 0,42in | 12mm
Weight | Peso | Poids: 16,35oz/ft² | 5.000 gr/m²
Colours | Colores | Couleurs: 25

Kids of the ocean

HAND TUFTED 100 LINES



KID-1

Customizable

Designer | Diseñador | Designer: Anna Muravina.
Bamboo silk | Bambú seda | Soie bambou.
Size | Tamaño | Mesures: 6'6"x9'8"-8'x10' | 200x300-250x300
Height | Altura | Hauteur: 0,39in | 10mm
Weight | Peso | Poids: 13oz/ft² | 4.000 gr/m²
Colours request | Colores a consultar | Couleurs demander.

Masha

HAND TUFTED 100 LINES



MAH-1

Customizable

Designer | Diseñador | Designer: Anna Muravina.
Bamboo silk | Bambú seda | Soie bambou.
Size | Tamaño | Mesures: 8'x10' | 250x300
Height | Altura | Hauteur: 0,39in | 10mm
Weight | Peso | Poids: 13oz/ft² | 4.000 gr/m²
Colours | Colores | Couleurs: 22

Grisha

HAND TUFTED 100 LINES



GRI-1

Customizable

Designer | Diseñador | Designer: Anna Muravina.
Bamboo silk | Bambú seda | Soie bambou.
Size | Tamaño | Mesures: 8'x10' | 250x300
Height | Altura | Hauteur: 0,39in | 10mm
Weight | Peso | Poids: 13oz/ft² | 4.000 gr/m²
Colours | Colores | Couleurs: 871-894-931-979-980-981

Vera

HAND TUFTED 100 LINES



VER-2

Customizable

Designer | Diseñador | Designer: Anna Muravina.
Bamboo silk | Bambú seda | Soie bambou.
Size | Tamaño | Mesures: 8'x10'4" | 245x315
Height | Altura | Hauteur: 0,39in | 10mm
Weight | Peso | Poids: 13oz/ft² | 4.000 gr/m²
Colours | Colores | Couleurs: 891-920-951-959-1000-01C

Language

HAND TUFTED



LG-01

Customizable

Designer | Diseñador | Designer: Stephanie Goto.
75% wool + 25% viscose | 75% lana + 25% viscosa | 75% laine nz. + 25% viscose.
Size | Tamaño | Mesures: 6'2"x8'2"-9'x12' | 190x250 - 270x365
Height | Altura | Hauteur: 0,66in | 17mm
Weight | Peso | Poids: 14oz/ft² | 4.250 gr/m²
Colours | Colores | Couleurs: 8955-949-995

Triangulos

HAND MADE KILIM



TRIANGULOS

Customizable

Designer | Diseñador | Designer: Inma Bermúdez
Recycled polyester | Poliéster reciclado | Polyester recyclé.
Size | Tamaño | Mesures: 6'x9'-8'x10'-9'x12' | 170x240-200x300-250x300
Height | Altura | Hauteur: 0,23in | 6mm
Weight | Peso | Poids: 6oz/ft² | 2.000 gr/m²
Colours | Colores | Couleurs: NC-001-NC-017-NC-020-NC-057-NC-173-NC-302-NC-350-NC-402

Mosaic

HAND MADE KILIM



MOSAIC

Customizable

Designer | Diseñador | Designer: Inma Bermúdez

Recycled polyester | Poliéster reciclado | Polyester recyclé.

Size | Tamaño | Mesures: 6'x9'-8'x10'-9'x12' | 170x240-200x300-250x300

Height | Altura | Hauteur: 0,23in | 6mm

Weight | Peso | Poids: 6oz/ft² | 2.000 gr/m²

Colours | Colores | Couleurs: NC-001-NC-009-NC-211-NC-306-NC-397-NC-410-NC-470

Etnica

HAND MADE KILIM



ETNICA

Customizable

Designer | Diseñador | Designer: Inma Bermúdez

Recycled polyester | Poliéster reciclado | Polyester recyclé.

Size | Tamaño | Mesures: 6'x9'-8'x10'-9'x12' | 170x240-200x300-250x300

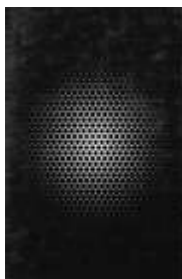
Height | Altura | Hauteur: 0,23in | 6mm

Weight | Peso | Poids: 6oz/ft² | 2.000 gr/m²

Colours | Colores | Couleurs:

AKARI

HAND KNOTTED 100 LINES



AK-01

Customizable

Designer | Diseñador | Designer: Yumi Endo.

80% wool + 20% viscose | 80% lana + 20% viscosa | 80% laine nz. + 20% viscose.

Size | Tamaño | Mesures: 5'6"x7'9"-6'6"x9'8"-7'9"x7'9"-8'10" | 170x240 - 200x300

Height | Altura | Hauteur: 0,39in | 10mm

Weight | Peso | Poids: 13oz/ft² | 4.000 gr/m²

Colours | Colores | Couleurs: 812-961

Akari Rounded

HAND KNOTTED 100 LINES



AKR-1

Customizable

Designer | Diseñador | Designer: Yumi Endo.

80% wool + 20% viscose | 80% lana + 20% viscosa | 80% laine nz. + 20% viscose.

Size | Tamaño | Mesures: Ø10' | Ø200

Height | Altura | Hauteur: 0,39in | 10mm

Weight | Peso | Poids: 13oz/ft² | 4.000 gr/m²

Colours | Colores | Couleurs: 812-961

Botan

HAND KNOTTED 100 LINES



BT-01

Customizable

Designer | Diseñador | Designer: Yumi Endo.

70% lana + 30% viscosa | 70% wool + 30% viscose | 70% laine nz. + 30% viscose.

Size | Tamaño | Mesures: 5'6"x7'9"-6'6"x9'8"-8'x10'-9'x12' | 170x240 - 200x300

Height | Altura | Hauteur: 0,39in | 10mm

Weight | Peso | Poids: 13oz/ft² | 4.000 gr/m²

Colours | Colores | Couleurs: 824-957

Corso

HAND KNOTTED 100 LINES



CR-01

Customizable

Designer | Diseñador | Designer: Jose Albors.

100% wool | 100% lana | 100% laine nz.

Size | Tamaño | Mesures: 5'6"x7'9"-6'6"x9'8"-8'x10' | 170x240-200x300-250x300

Height | Altura | Hauteur: 0,39in | 10mm

Weight | Peso | Poids: 13oz/ft² | 4.000 gr/m²

Colours | Colores | Couleurs: 981-845

Iceberg

HAND KNOTTED 100 LINES



IC-01

Customizable

Designer | Diseñador | Designer: Jose Albors.
 70% wool + 30% bamboo | 70% lana + 30% bambú | 70% laine nz. + 30% bambou.
 Size | Tamaño | Mesures: 5'6"x7'9"-6'6"x9'8"-8'x10'-9'x12' | 170x240-200x300-250x300
 Height | Altura | Hauteur: 0,39in | 10mm
 Weight | Peso | Poids: 13oz/ft² | 4.000 gr/m²
 Colours | Colores | Couleurs: 981-853-955-991-899-940-987

Connection

HAND KNOTTED 80 LINES



CNN-01

Customizable

Designer | Diseñador | Designer: Jose Albors.
 80% wool + 20% bamboo | 80% lana + 20% bambú | 80% laine nz. + 20% bambou.
 Size | Tamaño | Mesures: 5'6"x7'9"-6'6"x9'8"-8'x10'-9'x12' | 170x240-200x300-250x300
 Height | Altura | Hauteur: 0,39in | 10mm
 Weight | Peso | Poids: 12oz/ft² | 3.750 gr/m²
 Colours | Colores | Couleurs: 871-01A

Sabbia

HAND KNOTTED 100 LINES



SB-01

Customizable

Designer | Diseñador | Designer: Jose Albors.
 100% wool | 100% lana | 100% laine nz.
 Size | Tamaño | Mesures: 5'6"x7'9"-6'6"x9'8"-8'x10'-9'x12' | 170x240-200x300-250x300
 Height | Altura | Hauteur: 0,39in | 10mm
 Weight | Peso | Poids: 13oz/ft² | 4.000 gr/m²
 Colours | Colores | Couleurs: 801-845

Fiumi bamboo

HAND KNOTTED 100 LINES



FU-14-1

Customizable

Designer | Diseñador | Designer: Jose Albors.
 100% bamboo silk hand-spun | 100% bambú seda hand-spun | 100% soie bambou hand-spun
 Size | Tamaño | Mesures: 5'6"x7'9"-6'6"x9'8"-8'x10'-9'x12' | 170x240-200x300-250x300
 Height | Altura | Hauteur: 0,47in | 12mm
 Weight | Peso | Poids: 15oz/ft² | 4.500 gr/m²
 Colours | Colores | Couleurs: 13P-12i

Fiumi

HAND TUFTED



FU-01

Customizable

Designer | Diseñador | Designer: Jose Albors.
 100% wool | 100% lana | 100% laine nz.
 Size | Tamaño | Mesures: 5'6"x7'9"-6'6"x9'8"-8'x10'-9'x12' | 170x240-200x300-250x300
 Height | Altura | Hauteur: 0,66in | 17mm
 Weight | Peso | Poids: 14oz/ft² | 4.250 gr/m²
 Colours | Colores | Couleurs: 812-961

Mire

HAND TUFTED



MR-01

Customizable

Designer | Diseñador | Designer: Jose Albors.
 100% wool | 100% lana | 100% laine nz.
 Size | Tamaño | Mesures: 5'x7'8" | 150x240
 Height | Altura | Hauteur: 0,78in | 20mm
 Weight | Peso | Poids: 16oz/ft² | 4.750 gr/m²
 Colours | Colores | Couleurs:

Skull

HAND TUFTED



LL-01

Customizable

Designer | Diseñador | Designer: Claudio Colucci.
 100% wool | 100% lana | 100% laine nz.
 Size | Tamaño | Mesures: 6'6"x9'8" | 200x300
 Height | Altura | Hauteur: 0,66in | 17mm
 Weight | Peso | Poids: 14oz/ft² | 4.250 gr/m²
 Colours request | Colores a consultar | Couleurs demander

Skyscraper

HAND TUFTED



SS-01

Customizable

Designer | Diseñador | Designer: Claudio Colucci.
 100% wool | 100% lana | 100% laine nz.
 Size | Tamaño | Mesures: 6'6"x9'8" | 200x300
 Height | Altura | Hauteur: 0,66in | 17mm
 Weight | Peso | Poids: 14oz/ft² | 4.250 gr/m²
 Colours request | Colores a consultar | Couleurs demander

Squeeze 1

HAND TUFTED



SQ-01

Customizable

Designer | Diseñador | Designer: Claudio Colucci.
 100% wool | 100% lana | 100% laine nz.
 Size | Tamaño | Mesures: 5'6"x7'9"-6'6"x9'8"-8'x10' | 170x240-200x300
 Height | Altura | Hauteur: 0,66in | 17mm
 Weight | Peso | Poids: 14oz/ft² | 4.250 gr/m²
 Colours | Colores | Couleurs: 929-909-989-889 975-949-870-910 890-833-825-805-812

Squeeze 2

HAND TUFTED



SQ-02

Customizable

Designer | Diseñador | Designer: Claudio Colucci.
 100% wool | 100% lana | 100% laine nz.
 Size | Tamaño | Mesures: 5'6"x7'9"-6'6"x9'8"-8'x10' | 170x240-200x300
 Height | Altura | Hauteur: 0,66in | 17mm
 Weight | Peso | Poids: 14oz/ft² | 4.250 gr/m²
 Colours | Colores | Couleurs: 833-910-870 949-889-909

Squeeze 3

HAND TUFTED



SQ-03

Customizable

Designer | Diseñador | Designer: Claudio Colucci.
 100% wool | 100% lana | 100% laine nz.
 Size | Tamaño | Mesures: 5'6"x7'9"-6'6"x9'8"-8'x10' | 170x240-200x300
 Height | Altura | Hauteur: 0,66in | 17mm
 Weight | Peso | Poids: 14oz/ft² | 4.250 gr/m²
 Colours | Colores | Couleurs: 833-910-870 949-889-909

Squeeze

HAND TUFTED



SQ-10

Customizable

Designer | Diseñador | Designer: Claudio Colucci.
 100% wool | 100% lana | 100% laine nz.
 Size | Tamaño | Mesures: 5'6"x7'9"-6'6"x9'8"-8'x10' | 170x240-200x300
 Height | Altura | Hauteur: 0,66in | 17mm
 Weight | Peso | Poids: 14oz/ft² | 4.250 gr/m²
 Colours | Colores | Couleurs: 910

Miles

HAND KNOTTED 100 LINES



ML-01

Customizable

Designer | Diseñador | Designer: Moneo Brock.
 80% lana + 20% bambú | 80% wool + 20% bamboo | 80% laine nz. + 20% bambou.
 Size | Tamaño | Mesures: 5'6"x7'9"-6'6"x9'8"-8'x10'-9'x12' | 170x240-200x300-250x300
 Height | Altura | Hauteur: 0,39in | 10mm
 Weight | Peso | Poids: 13oz/ft² | 4.000 gr/m²
 Colours | Colores | Couleurs: 989-995-909-15J-11A-14J-11P-11B-09K

Alphabet

HAND TUFTED



AF -01

Customizable

Designer | Diseñador | Designer: Moneo Brock.
 100% wool | 100% lana | 100% laine nz.
 Size | Tamaño | Mesures: 5'6"x7'9"-6'6"x9'8"-8'x10'-9'x12' | 170x240-200x300-250x300
 Height | Altura | Hauteur: 0,70in | 18mm
 Weight | Peso | Poids: 14oz/ft² | 4.250 gr/m²
 Colours | Colores | Couleurs: 932-911

Filaments

HAND TUFTED



FT-01

Customizable

Designer | Diseñador | Designer: Michael Banks.
 75% wool + 25% viscose | 75% lana + 25% viscosa | 75% laine nz. + 25% viscose.
 Size | Tamaño | Mesures: 5'6"x7'9"-6'6"x9'8"-8'x10' | 170x240-200x300
 Height | Altura | Hauteur: 0,66in | 17mm
 Weight | Peso | Poids: 14oz/ft² | 4.250 gr/m²
 Colours | Colores | Couleurs: 902-822-825

Urban

HAND TUFTED



UR-01

Customizable

Designer | Diseñador | Designer: Michael Banks.
 100% wool | 100% lana | 100% laine nz.
 Size | Tamaño | Mesures: 5'6"x7'9"-6'6"x9'8"-8'x10' | 170x240-200x300
 Height | Altura | Hauteur: 0,70in | 18mm
 Weight | Peso | Poids: 14oz/ft² | 4.250 gr/m²
 Colours | Colores | Couleurs: 961-870-812

Flammes

HAND TUFTED



FM-02

Customizable

Designer | Diseñador | Designer: Vicente Vidal.
 100% wool | 100% lana | 100% laine nz.
 Size | Tamaño | Mesures: 5'6"x7'9"-6'6"x9'8"-8'x10' | 150x200-170x240-200x300
 Height | Altura | Hauteur: 0,66in | 17mm
 Weight | Peso | Poids: 14oz/ft² | 4.250 gr/m²
 Colours | Colores | Couleurs: 986-845-981

Flammes square

HAND TUFTED



FM-03

Customizable

Designer | Diseñador | Designer: Vicente Vidal.
 100% wool | 100% lana | 100% laine nz.
 Size | Tamaño | Mesures: 5'6"x7'9"-6'6"x9'8"-8'x10' | 150x200-170x240-200x300
 Height | Altura | Hauteur: 0,66in | 17mm
 Weight | Peso | Poids: 14oz/ft² | 4.250 gr/m²
 Colours | Colores | Couleurs: 986-845-981-887

Vagues de la mer

HAND TUFTED



VM-01

Customizable

Designer | Diseñador | Designer: Vicente Vidal.

100% wool | 100% lana | 100% laine nz.

Size | Tamaño | Mesures: 5'6"x7'9"-6'6"x9'8"-8'x10' | 150x200-170x240-200x300

Height | Altura | Hauteur: 0,66in | 17mm

Weight | Peso | Poids: 14oz/ft² | 4.250 gr/m²

Colours | Colores | Couleurs: 890-961-915-829

Rêves Arabes

HAND TUFTED



RB -02

Customizable

Designer | Diseñador | Designer: Vicente Vidal.

100% wool | 100% lana | 100% laine nz.

Size | Tamaño | Mesures: 5'6"x7'9"-6'6"x9'8"-8'x10' | 150x200-170x240-200x300

Height | Altura | Hauteur: 0,66in | 17mm

Weight | Peso | Poids: 14oz/ft² | 4.250 gr/m²

Colours | Colores | Couleurs: 806-822-981-997

Un Papillon

HAND TUFTED



PN-02

Customizable

Designer | Diseñador | Designer: Vicente Vidal.

100% wool | 100% lana | 100% laine nz.

Size | Tamaño | Mesures: 5'6"x7'9"-6'6"x9'8"-8'x10' | 150x200-170x240-200x300

Height | Altura | Hauteur: 0,66in | 17mm

Weight | Peso | Poids: 14oz/ft² | 4.250 gr/m²

Colours | Colores | Couleurs: 981-812-982

Tanger

HAND SPUN 100 LINES



TAN-01

Customizable

Designer | Diseñador | Designer: My Now

80%+20% wool+cotton | 80%+20% lana+algodón | 80%+20% laine+coton.

Size | Tamaño | Mesures: 5'6"x7'9"-6'6"x9'8"-8'x10' | 170x240-200x300

Height | Altura | Hauteur: 1,56in | 40mm

Weight | Peso | Poids: 14oz/ft² | 4.250 gr/m²

Colours | Colores | Couleurs: Grey HSW15



TAN-02

Customizable

Designer | Diseñador | Designer: My Now

80%+20% wool+cotton | 80%+20% lana+algodón | 80%+20% laine+coton.

Size | Tamaño | Mesures: 5'6"x7'9"-6'6"x9'8"-8'x10' | 170x240-200x300

Height | Altura | Hauteur: 1,56in | 40mm

Weight | Peso | Poids: 14oz/ft² | 4.250 gr/m²

Colours | Colores | Couleurs: Brown MO5



TAN-03

Customizable

Designer | Diseñador | Designer: My Now

80%+20% wool+cotton | 80%+20% lana+algodón | 80%+20% laine+coton.

Size | Tamaño | Mesures: 5'6"x7'9"-6'6"x9'8"-8'x10' | 170x240-200x300

Height | Altura | Hauteur: 1,56in | 40mm

Weight | Peso | Poids: 14oz/ft² | 4.250 gr/m²

Colours | Colores | Couleurs: Natural HSW25

Gobi

LOOM-KNOTTED DOUBLE BACK



GOB-01

Customizable

Designer | Diseñador | Designer: MY NOW.

80%+20% mix lana&tencel+algodón | mix wool&tencel+cotton | mix laine&tencel+coton.

Size | Tamaño | Mesures: 5'6"x7'9"-6'6"x9'8"-8'x10' | 170x240-200x300-250x300

Height | Altura | Hauteur: 0,46in | 12mm

Weight | Peso | Poids: 13oz/ft² | 4.000 gr/m²

Colours | Colores | Couleurs: Silver

Dune In & Outdoor

LOOM-KNOTTED DOUBLE BACK



DUN -4/312

Customizable

Designer | Diseñador | Designer: Vicente Vidal.

100% wool | 100% lana | 100% laine nz.

Size | Tamaño | Mesures: 5'6"x7'9"-6'6"x9'8"-8'x10' | 150x200-170x240-200x300

Height | Altura | Hauteur: 0,66in | 17mm

Weight | Peso | Poids: 14oz/ft² | 4.250 gr/m²

Colours | Colores | Couleurs: Blue

Onn

LOOM-KNOTTED DOUBLE BACK



ONN-01

Customizable

Designer | Diseñador | Designer: Vicente Vidal.

50%+50% bambú seda+lana natural | bamboo silk+natural wool | soie bambou+laine naturelle.

Size | Tamaño | Mesures: 5'6"x7'9"-6'6"x9'8"-8'x10' | 150x200-170x240-200x300

Height | Altura | Hauteur: 0,31in | 8mm

Weight | Peso | Poids: 11oz/ft² | 3.250 gr/m²

Colours | Colores | Couleurs: 20A-19C

Basic bamboo silk

HAND KNOTT



TAN-01

Customizable

Designer | Diseñador | Designer: My Now

80%+20% wool+cotton | 80%+20% lana+algodón | 80%+20% laine+coton.

Size | Tamaño | Mesures: 5'6"x7'9"-6'6"x9'8"-8'x10' | 170x240-200x300

Height | Altura | Hauteur: 1,39in | 10mm

Weight | Peso | Poids: 13oz/ft² | 4.000 gr/m²

Colours | Colores | Couleurs: Grey HSW15

Tratamiento scotchguard™ | Treatment scotchguard™ | Traitement scotchguard™

Features | Características | Caractéristiques

100 % natural fiber / high resistance and durability / ecological / antibacterial un agent / scotchgard™ (dirt repelent) / antiallergic. Rugs up to 8'81"ft wide and/or 129 ft2 of total area. For bigger sizes, please ask for quotation.

100 % fibra natural / alta resistencia y durabilidad / ecológica / agente un anti-bacteriano / scotchgard™ (repelente suciedad) / antialérgica. Alfombras de hasta 8'81"ft de ancho y 129 ft2 de área total. Para medidas mayores solicitar presupuesto

Fibre 100 % naturelle / haute résistance et durabilité / écologique / agent un antibactérien / scotchgard™ (répulsif de l'encrassement) / antiallergique. Tapis jusqu'à 8'81"ft de large et / ou 129 ft2 de la superficie totale. Pour les zones plus grand, s'il vous plaît demande de devis.



IN & OUTDOOR



Palma



POL-04

Customizable

Designer | Diseñador | Designer: Romero y Vallejo
 Polypropylene | Polipropileno | Polypropilène
 Size | Tamaño | Mesures: 6'x9'-8'x10'-9'x12' | 200x300-250x300-275x365
 Height | Altura | Hauteur: 0,41 in | 10,55 mm
 Weight | Peso | Poids: 9,18 oz/ft² | 2.800 gr/m²
 Colours | Colores | Couleurs: 35 & 20
 Max. wide | Anchura máx. | Largueur: 27' | 8 m



PL-02

Customizable

Designer | Diseñador | Designer: Romero y Vallejo
 Polypropylene | Polipropileno | Polypropilène
 Size | Tamaño | Mesures: 6'x9'-8'x10'-9'x12' | 200x300-250x300-275x365
 Height | Altura | Hauteur: 0,41 in | 10,55 mm
 Weight | Peso | Poids: 8,52 oz/ft² | 2.600 gr/m²
 Colours | Colores | Couleurs: 13 & 68
 Max. wide | Anchura máx. | Largueur: 18' | 5,5 m



PL-03

Customizable

Designer | Diseñador | Designer: My Now
 Polypropylene | Polipropileno | Polypropilène
 Size | Tamaño | Mesures: 6'x9'-8'x10'-9'x12' | 200x300-250x300-275x365
 Height | Altura | Hauteur: 0,33 in | 8,5 mm
 Weight | Peso | Poids: 5,9 oz/ft² | 1.800 gr/m²
 Colours | Colores | Couleurs: 9, 14 & 16
 Max. wide | Anchura máx. | Largueur: 27' | 8 m

Palma

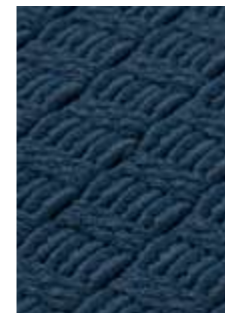


POL-04

Customizable

Designer | Diseñador | Designer: My Now
 Polypropylene | Polipropileno | Polypropilène
 Size | Tamaño | Mesures: 6'x9'-8'x10'-9'x12' | 200x300-250x300-275x365
 Height | Altura | Hauteur: 0,35 in | 9 mm
 Weight | Peso | Poids: 7,4 oz/ft² | 2.300 gr/m²
 Colours | Colores | Couleurs: 13, 16, 21 & 27
 Max. wide | Anchura máx. | Largueur: 18' | 5,5 m

Palma



POL-07

Customizable

Designer | Diseñador | Designer: My Now
 Polypropylene | Polipropileno | Polypropilène
 Size | Tamaño | Mesures: 6'x9'-8'x10'-9'x12' | 200x300-250x300-275x365
 Height | Altura | Hauteur: 0,47 in | 12 mm
 Weight | Peso | Poids: 11,8 oz/ft² | 3.600 gr/m²
 Colours | Colores | Couleurs: 41
 Max. wide | Anchura máx. | Largueur: 13' | 4 m



PL-05

Customizable

Designer | Diseñador | Designer: My Now
 Polypropylene | Polipropileno | Polypropilène
 Size | Tamaño | Mesures: 6'x9'-8'x10'-9'x12' | 200x300-250x300-275x365
 Height | Altura | Hauteur: 0,24 in | 6 mm
 Weight | Peso | Poids: 4,92 oz/ft² | 1.500 gr/m²
 Colours | Colores | Couleurs: 2, 8, 9, 13, 16 & 39
 Max. wide | Anchura máx. | Largueur: 27' | 8 m



PL-08

Customizable

Designer | Diseñador | Designer: My Now
 Polypropylene | Polipropileno | Polypropilène
 Size | Tamaño | Mesures: 6'x9'-8'x10'-9'x12' | 200x300-250x300-275x365
 Height | Altura | Hauteur: 0,47 in | 12 mm
 Weight | Peso | Poids: 12,79 oz/ft² | 3.900 gr/m²
 Colours | Colores | Couleurs: 23 & 33
 Max. wide | Anchura máx. | Largueur: 13' | 4 m



PL-06

Customizable

Designer | Diseñador | Designer: My Now
 Polypropylene | Polipropileno | Polypropilène
 Size | Tamaño | Mesures: 6'x9'-8'x10'-9'x12' | 200x300-250x300-275x365
 Height | Altura | Hauteur: 0,37 in | 9,5 mm
 Weight | Peso | Poids: 9,83 oz/ft² | 3.000 gr/m²
 Colours | Colores | Couleurs: 8 & 55
 Max. wide | Anchura máx. | Largueur: 13' | 4 m



PL-09

Customizable

Designer | Diseñador | Designer: My Now
 Polypropylene | Polipropileno | Polypropilène
 Size | Tamaño | Mesures: 6'x9'-8'x10'-9'x12' | 200x300-250x300-275x365
 Height | Altura | Hauteur: 0,63 in | 16 mm
 Weight | Peso | Poids: 10,16 oz/ft² | 3.100 gr/m²
 Colours | Colores | Couleurs: 22 & 27
 Max. wide | Anchura máx. | Largueur: 13' | 4 m

Palma



POL-10

Customizable

Designer | Diseñador | Designer: My Now
 Polypropylene | Polipropileno | Polypropilène
 Size | Tamaño | Mesures: 6'x9'-8'x10'-9'x12' | 200x300-250x300-275x365
 Height | Altura | Hauteur: 0,35 in | 9 mm
 Weight | Peso | Poids: 7,4 oz/ft² | 2.300 gr/m²
 Colours | Colores | Couleurs: 16 & 75
 Max. wide | Anchura máx. | Largeur: 27' | 8 m



PL-11

Customizable

Designer | Diseñador | Designer: My Now
 Polypropylene | Polipropileno | Polypropilène
 Size | Tamaño | Mesures: 6'x9'-8'x10'-9'x12' | 200x300-250x300-275x365
 Height | Altura | Hauteur: 0,24 in | 6 mm
 Weight | Peso | Poids: 4,92 oz/ft² | 1.500 gr/m²
 Colours | Colores | Couleurs: 5, & 35
 Max. wide | Anchura máx. | Largeur: 18' | 5,5 m



PL-12

Customizable

Designer | Diseñador | Designer: My Now
 Polypropylene | Polipropileno | Polypropilène
 Size | Tamaño | Mesures: 6'x9'-8'x10'-9'x12' | 200x300-250x300-275x365
 Height | Altura | Hauteur: 0,37 in | 9,5 mm
 Weight | Peso | Poids: 9,83 oz/ft² | 3.000 gr/m²
 Colours | Colores | Couleurs: 9 & 37
 Max. wide | Anchura máx. | Largeur: 27' | 8 m

Palma Rounded



PLR-01

Customizable

Designer | Diseñador | Designer: Romero y Vallejo
 Polypropylene | Polipropileno | Polypropilène
 Size | Tamaño | Mesures: 6'x9'-8'x10'-9'x12' | 200x300-250x300-275x365
 Height | Altura | Hauteur: 0,35 in | 9 mm
 Weight | Peso | Poids: 7,54 oz/ft² | 2.300 gr/m²
 Colours | Colores | Couleurs: 23, 27, & 41
 Max. wide | Anchura máx. | Largeur: 3' | 9 m



PLR-02

Customizable

Designer | Diseñador | Designer: Romero y Vallejo
 Polypropylene | Polipropileno | Polypropilène
 Size | Tamaño | Mesures: 6'x9'-8'x10'-9'x12' | 200x300-250x300-275x365
 Height | Altura | Hauteur: 0,35 in | 9 mm
 Weight | Peso | Poids: 7,54 oz/ft² | 2.300 gr/m²
 Colours | Colores | Couleurs: 36, 27, & 41
 Max. wide | Anchura máx. | Largeur: 3' | 9 m

Miami



PLR-01

Designer | Diseñador | Designer: Romero y Vallejo
 Polypropylene | Polipropileno | Polypropilène
 Size | Tamaño | Mesures: 6'x9'-8'x10'-9'x12' | 200x300-250x300-275x365
 Height | Altura | Hauteur: 0,31 in | 7,88 mm
 Weight | Peso | Poids: 10 oz/ft² | 2.900 gr/m²
 Colours | Colores | Couleurs: 28
 Max. wide | Anchura máx. | Largeur: 27' | 8 m

Tangram



Tear

Customizable

Designer | Diseñador | Designer: Nonna Design
 Polypropylene | Polipropileno | Polypropilène
 Size | Tamaño | Mesures: 6'x9'-8'x10'-9'x12' | 200x300-250x300-275x365
 Height | Altura | Hauteur: 0,5 in | 13 mm
 Weight | Peso | Poids: 10 oz/ft² | 2.900 gr/m²
 Colours | Colores | Couleurs: 8, 41 & 42
 Max. wide | Anchura máx. | Largueur: 18' | 5,5 m



Half moon

Customizable

Designer | Diseñador | Designer: Nonna Design
 Polypropylene | Polipropileno | Polypropilène
 Size | Tamaño | Mesures: 6'x9'-8'x10'-9'x12' | 200x300-250x300-275x365
 Height | Altura | Hauteur: 0,5 in | 13 mm
 Weight | Peso | Poids: 10 oz/ft² | 2.900 gr/m²
 Colours | Colores | Couleurs: 8 & 76
 Max. wide | Anchura máx. | Largueur: 18' | 5,5 m



Line

Customizable

Designer | Diseñador | Designer: Nonna Design
 Polypropylene | Polipropileno | Polypropilène
 Size | Tamaño | Mesures: 6'x9'-8'x10'-9'x12' | 200x300-250x300-275x365
 Height | Altura | Hauteur: 0,5 in | 13 mm
 Weight | Peso | Poids: 10 oz/ft² | 2.900 gr/m²
 Colours | Colores | Couleurs: 56, 57 & 68
 Max. wide | Anchura máx. | Largueur: 18' | 5,5 m



Moon

Customizable

Designer | Diseñador | Designer: My Now
 Polypropylene | Polipropileno | Polypropilène
 Size | Tamaño | Mesures: 6'x9'-8'x10'-9'x12' | 200x300-250x300-275x365
 Height | Altura | Hauteur: 0,5 in | 13 mm
 Weight | Peso | Poids: 10 oz/ft² | 2.900 gr/m²
 Colours | Colores | Couleurs: 9 & 31
 Max. wide | Anchura máx. | Largueur: 27' | 8 m

CERTIFICATES

TECNOLOGICAL INSTITUTE CENTEXBEL - BELGIUM
 VTEC LABORATORIES INC. - USA
 ISO 8302 RADIANT HEATING WIRE SYSTEM
 SCOTCHGARD™ TREATMENT Dirt repellent

WOOL & WOOL+VISCOSE & BAMBOO
 STANDARD FOR THE SURFACE FLAMMABILITY
 OF CARPETS AND RUGS



CFR part 1630: DOC FFI-70
 CFR part 1631: DOC FF2-70
 ASTM D2859

ISO 8302 RADIANT HEATING WIRE SYSTEM



nc

SCOTCHGARD™ TREATMENT Dirt repellent



ACTIVE MEMBER OF RUGMARK



We members of the international program RUGMARK against child exploitation, ensuring non involvement of child labour in any of the processes.



• It will pass through flammability test I Testado y certificado en el test de inflamabilidad I Testé et certifié dans le test d'inflammabilité 16CFR-1630 (FFI-70).



• It will pass through UVR transmission test I Testado y certificado en el test de transmisión UVR I Testé et certifié dans le test de transmission UVR AATCC183-210.



• It will pass through mildew resistance properties test I Testado y certificado en el test de propiedades de resistencia al moho I Testé et certifié dans le test des propriétés de résistance aux moisissures AATCC 174-20017 AATCC 30.



• ADA compliant I Cumple con la normativa ADA I Conforme à l'ADA.



• It will pass through colour fastness test, colour staining - in the level of 4/4.5 I Testado y certificado en el test de solidez de color - en el nivel 4/4.5 I Testé et certifié dans le test de solidité des couleurs - au niveau 4/4.5
 • Colour fastness to dry and wet crocking - 4 I Solidez del color al secado en húmedo y seco - 4 I Solidité des couleurs au séchage humide et sec - 4.
 • Colour fastness to light AATCC 16.3 after 300 hours - 4 I Solidez del color a la luz AATCC 16.3 después de 300 horas I Solidité des couleurs à la lumière AATCC 16.3 après 300 heures.

CLEANING

We protect our carpets by treating them with Scotchgard™, which helps repel and clean stains.

We produce our carpets using the best fibres but they require certain care to guarantee a longer life:

- Vacuum the carpet regularly at medium power and always in the direction of the pile.
- Never use the brush attachment as it will damage the wool strands.
- Vacuum clean without rubbing so that any surplus fibres or fluff disappear.
- Check that the vacuum cleaner bag is clean.
- We recommend rotating the carpet to ensure that normal wear occurs uniformly.
- Do not use chemical products or dry clean the carpet as this will damage its colours.
- Every so often take the carpet to a specialized carpet-cleaning establishment.

Cleaning care:

- When a stain occurs take action as quickly as possible. Wipe the stained area with a damp, white cloth to get rid of most of the stain, especially if the carpet has an anti-stain treatment.
- Never rub a liquid stain, try to soak it up using a clean cloth, absorbent cardboard or sponge.
- Always use cold or warm water, never hot water as this fixes the stain
- If the stain is a solid or gooey product it should be removed first using a spatula or damp spoon before applying a stain remover.
- This operation should be performed from the outside to the inside.
- Try to get rid of all remains of the stain before applying a stain remover.
- Before using a product read the instructions carefully and check that it will not discolour the carpet.

Protegemos nuestras alfombras con el tratamiento Scotchgard™, que ayuda a repeler y limpiar las manchas.

Fabricamos nuestras alfombras utilizando las mejores fibras, pero es necesario aplicar ciertos cuidados para garantizar una vida más larga:

- Aspirar la alfombra regularmente a media potencia y siempre en el sentido del pelo.
- No utilizar nunca el aspirador en cepillo, ya que perjudicará los hilos de la lana.
- Aspirar sin frotar para que la pelusilla y el exceso de fibras desaparezcan.
- Vigilar que la bolsa esté limpia.
- Conviene rotar la alfombra para que el lógico desgaste sea uniforme.
- No utilizar productos químicos ni limpiar en seco, ya que perjudicaremos los colores de la alfombra.
- Llevarla cada cierto tiempo a una tienda especializada en la limpieza de alfombras.

Cuidados en limpieza:

- Hay que intervenir lo antes posible, pasando un paño blanco humedecido ligeramente en agua para eliminar la mayor parte de la mancha, especialmente si la alfombra tiene un tratamiento anti-manchas.
- Nunca hay que frotar una mancha líquida. Hay que tratar de absorberla con un paño limpio, un cartón absorbente o una esponja.
- Debemos utilizar siempre agua fría o templada, nunca agua caliente, porque fija la suciedad.
- Si la mancha es pastosa o sólida, hay que quitarla previamente con la ayuda de una espátula o una cucharilla humedecida antes de aplicar un quitamanchas.
- Esta operación debe llevarse desde el exterior hacia el interior.
- Procurar quitar todos los restos de mancha antes de aplicar cualquier quitamanchas.
- Antes de usar cualquier producto, leer detenidamente las indicaciones y comprobar que no va a ocasionar decoloración.



Thanks you all our families, friends,
clients, colleagues, suppliers collaborators &
professionals that made this catalogue
possible.

Thank you | Gracias | Merci

New York

NOW CARPETS USA INC
174 FIFTH AVENUE, SUITE 503
NEW YORK, NY 10010 (USA)
TEL: +1 646 583 2949
usa@nowcarpets.com

Miami

NOW CARPETS USA INC
2727 PONCE DE LEÓN BVLD
CORAL GABLES, FL 33134(USA)
TEL: +1 646 583 2949
usa@nowcarpets.com

EUROPA

NOW CARPETS S.C.
Pº INDEPENDENCIA 8 DUP. 2ª
50004 ZARAGOZA (SPAIN)
TEL: +34 976 46 36 45
now@nowcarpets.com

NOW
C A R P E T S